

Basic Information

Product Name	Anti-P53/TP53 (Phospho-T55) Antibody (Clone#DGO-20)
Gene Name	TP53
Source	Rabbit
Clonality	Monoclonal
Isotype	IgG
Species Reactivity	human
Tested Application	WB
Contents	500 ug/ml; Rabbit IgG in phosphate buffered saline, pH 7.4, 150mM NaCl, 0.02% sodium azide, 0.4-0.5 mg/ml BSA and 50% glycerol.
Immunogen	A synthesized peptide derived from human Phospho-p53 (T55)
Concentration	500 ug/ml
Purification	Affinity-chromatography
Observed MW	53 kDa
Dilution Ratios	Western blot (WB):1:500-2000

Storage

12 months from date of receipt, -20°C as supplied.

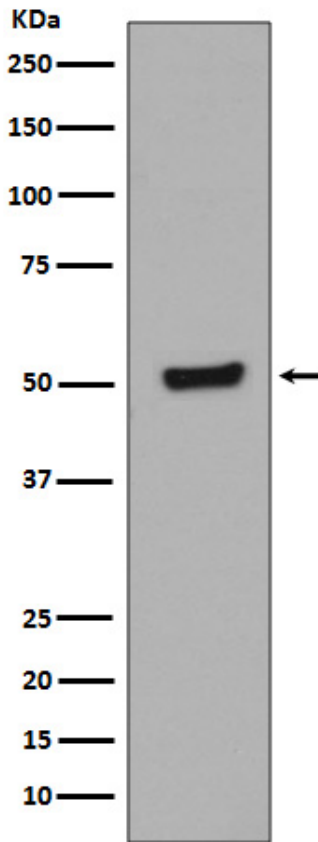
Background Information

The p53 tumor antigen is found in increased amounts in a wide variety of transformed cells. The protein is also detectable in many actively proliferating, nontransformed cells, but it is undetectable or present at low levels in resting cells. This protein induces cell cycle arrest or apoptosis in response to sublethal or severe DNA damage, respectively, by differential transcription of target genes and through transcription-independent apoptotic functions. The p53 protein contains 393 amino acids. Human p53 tumour antigen is Located to band 17p13. p53 mutations are common in pancreatic cancer and are absent in chronic pancreatitis.

Selected Validation Data

**Anti-P53/TP53 (Phospho-T55) Antibody
(Clone#DGO-20)**

Catalog Number: BM4330



Western blot analysis of Phospho-p53 (T55) in HEK293 cell lysates treated with Calyculin A and Okadaic Acid.