

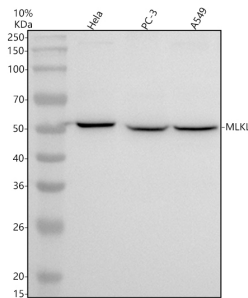
Basic Information

Product Name	Anti-MLKL Antibody (Clone#DGB-13)
Gene Name	MLKL
Source	Rabbit
Clonality	Monoclonal
Isotype	IgG
Species Reactivity	human
Tested Application	WB, IHC
Contents	500 ug/ml; Rabbit IgG in phosphate buffered saline, pH 7.4, 150mM NaCl, 0.02% sodium azide, 0.4-0.5 mg/ml BSA and 50% glycerol.
Immunogen	A synthesized peptide derived from human MLKL
Concentration	500 ug/ml
Purification	Affinity-chromatography
Observed MW	54 kDa
Dilution Ratios	Western blot (WB): 1:500-2000 Immunohistochemistry (IHC):1:50-200

Storage

12 months from date of receipt, -20°C as supplied.

Selected Validation Data



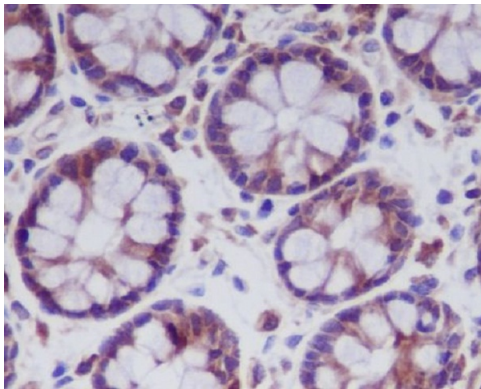
Western blot analysis of anti-MLKL antibody (BM4332). The sample well of each lane was loaded with 30 ug of sample under reducing conditions.

Lane 1: human Hela whole cell lysates,

Lane 2: human PC-3 whole cell lysates,

Lane 3: human A549 whole cell lysates.

After electrophoresis, proteins were transferred to a membrane. Then the membrane was incubated with rabbit anti-MLKL antigen affinity purified monoclonal antibody (BM4332) at a dilution of 1:1000 and probed with a goat anti-rabbit IgG-HRP secondary antibody (Catalog # BA1054). The signal is developed using ECL Plus Western Blotting Substrate (Catalog # AR1197). A specific band was detected for MLKL at approximately 54 kDa. The expected band size for MLKL is at 54 kDa.



Immunohistochemical analysis of paraffin-embedded human colon, using MLKL Antibody.