

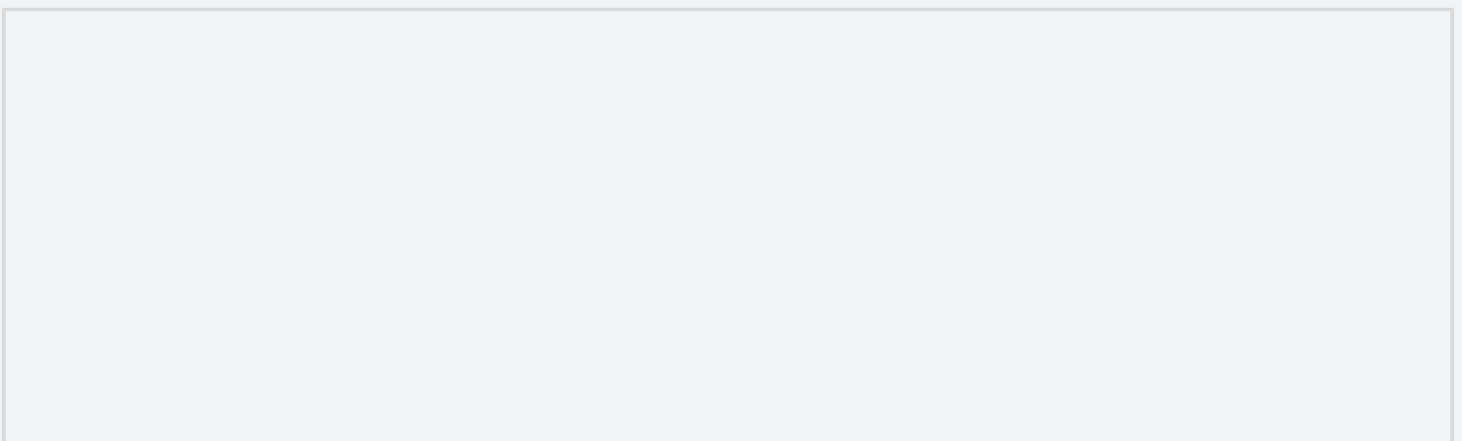
## Basic Information

<b>Product Name</b>	Anti-PI3K p55 Gamma/PIK3R3 Antibody (Clone#DHC-16)	
<b>Gene Name</b>	PIK3R3	
<b>Source</b>	Rabbit	
<b>Clonality</b>	Monoclonal	
<b>Isotype</b>	IgG	
<b>Species Reactivity</b>	human, mouse, rat	
<b>Tested Application</b>	WB,IHC,ICC/IF	
<b>Contents</b>	500 ug/ml; Rabbit IgG in phosphate buffered saline, pH 7.4, 150mM NaCl, 0.02% sodium azide, 0.4-0.5 mg/ml BSA and 50% glycerol.	
<b>Immunogen</b>	A synthesized peptide derived from human PI 3 Kinase p55 gamma	
<b>Concentration</b>	500 ug/ml	
<b>Purification</b>	Affinity-chromatography	
<b>Observed MW</b>	54 kDa	
<b>Dilution Ratios</b>	Western blot (WB):	1:500-2000
	Immunohistochemistry (IHC):	1:50-200
	Immunocytochemistry/Immunofluorescence (ICC/IF):	1:50-200

## Storage

12 months from date of receipt, -20°C as supplied. 6 months 2 to 8°C after reconstitution. Avoid repeated freezing and thawing.

## Selected Validation Data



Product datasheet

**Anti-PI3K p55 Gamma/PIK3R3**

**Antibody (Clone#DHC-16)**

**Catalog Number: BM4344**

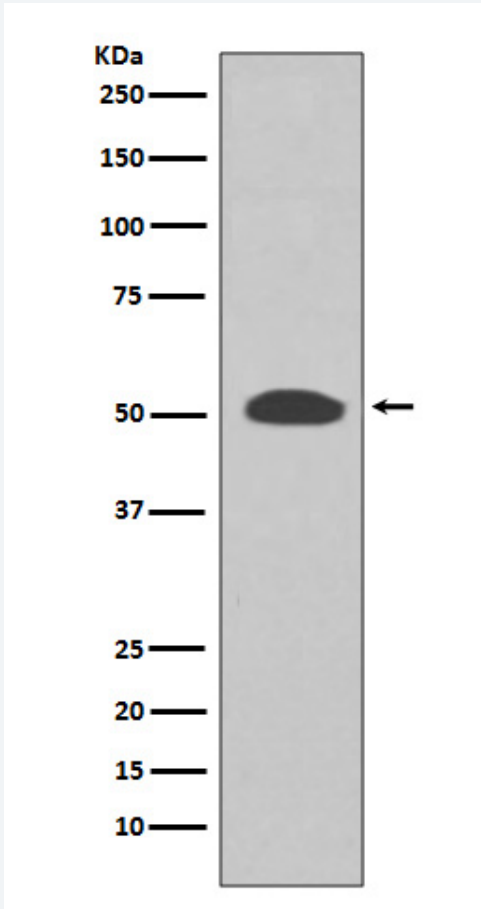
**BOSTER**

antibody and ELISA experts

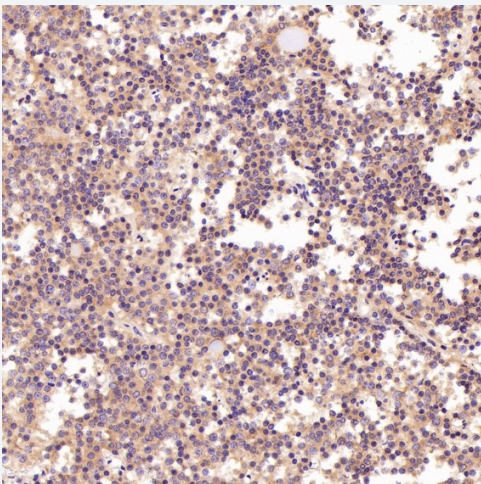
**BOSTER BIOLOGICAL TECHNOLOGY**

Building C21, 3rd and 4th floors, Optics Valley Biomedical Accelerator,  
Wuhan East Lake High-tech Development Zone

**Web:** www.boster.com **Phone:** 027-67845390 **Email:** boster@boster.com



Western blot analysis of PI 3 Kinase p55 gamma expression in SH-SY5Y cell lysate.



Immunohistochemical analysis of paraffin-embedded Human pituitary tumor, using the Antibody.

Product datasheet

**Anti-PI3K p55 Gamma/PIK3R3  
Antibody (Clone#DHC-16)**

**Catalog Number: BM4344**

**BOSTER**

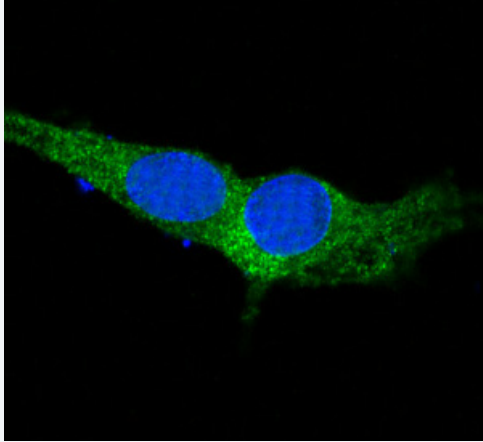
antibody and ELISA experts

**BOSTER BIOLOGICAL TECHNOLOGY**

Building C21, 3rd and 4th floors, Optics Valley Biomedical Accelerator,  
Wuhan East Lake High-tech Development Zone

**Web:** [www.boster.com](http://www.boster.com) **Phone:** 027-67845390 **Email:** [boster@boster.com](mailto:boster@boster.com)

PI 3 Kinase p55 gamma Antibody



Immunofluorescent analysis of C6 cells, using PI 3 Kinase p55 gamma Antibody .