

Basic Information

Product Name	Anti-CD8A Antibody (Clone#EAF-3)	
Gene Name	CD8A	
Source	Rabbit	
Clonality	Monoclonal	
Isotype	IgG	
Species Reactivity	human	
Tested Application	WB, IHC, ICC/IF	
Contents	500 ug/ml; Rabbit IgG in phosphate buffered saline, pH 7.4, 150mM NaCl, 0.02% sodium azide, 0.4-0.5 mg/ml BSA and 50% glycerol.	
Immunogen	A synthesized peptide derived from human CD8	
Concentration	500 ug/ml	
Purification	Affinity-chromatography	
Observed MW	26 kDa	
Dilution Ratios	Western blot (WB):	1:500-2000
	Immunohistochemistry (IHC):	1:50-200
	Immunocytochemistry/Immunofluorescence (ICC/IF):	1:50-200

Storage

12 months from date of receipt, -20°C as supplied.

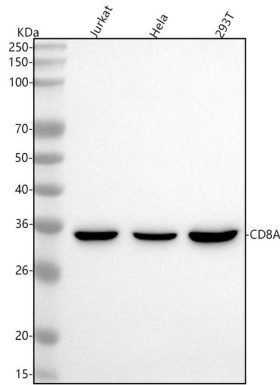
Background Information

The CD8 antigen is a cell surface glycoprotein found on most cytotoxic T lymphocytes that mediates efficient cell-cell interactions within the immune system. It is mapped to 2p11.2. The CD8 antigen, acting as a coreceptor, and the T-cell receptor on the T lymphocyte recognize antigen displayed by an antigen presenting cell (APC) in the context of class I MHC molecules. The functional coreceptor is either a homodimer composed of two alpha chains, or a heterodimer composed of one alpha and one beta chain. Both alpha and beta chains share significant homology to immunoglobulin variable light chains. This gene also encodes the CD8 alpha chain isoforms.

Reference

Anti-CD8A Antibody (Clone#EAF-3)被引用在3文献中。

Selected Validation Data



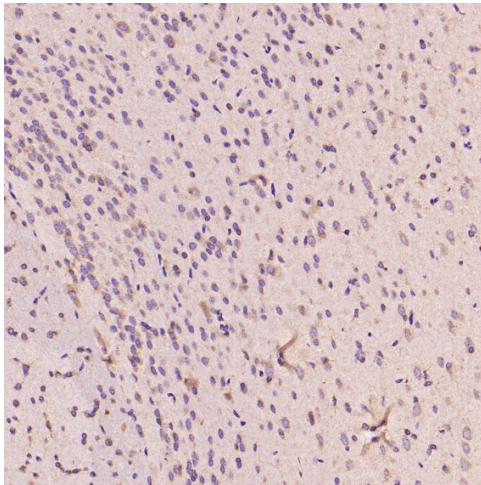
Western blot analysis of anti-CD8A antibody (BM4379). The sample well of each lane was loaded with 30 ug of sample under reducing conditions.

Lane 1: human Jurkat whole cell lysates,

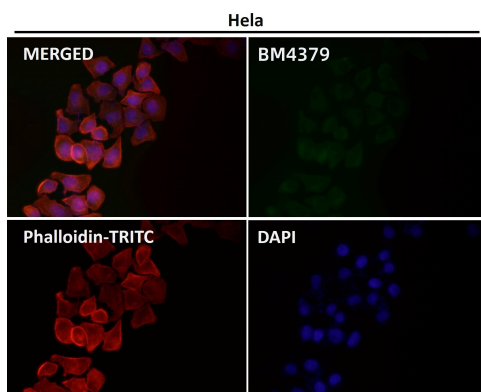
Lane 2: human Hela whole cell lysates,

Lane 3: human 293T whole cell lysates.

After electrophoresis, proteins were transferred to a membrane. Then the membrane was incubated with rabbit anti-CD8A antigen affinity purified monoclonal antibody (BM4379) at a dilution of 1:1000 and probed with a goat anti-rabbit IgG-HRP secondary antibody (Catalog # BA1054). The signal is developed using ECL Plus Western Blotting Substrate (Catalog # AR1197). A specific band was detected for CD8A at approximately 36 kDa. The expected band size for CD8A is at 23 kDa.



Immunohistochemical analysis of paraffin-embedded Rat kidney, using the Antibody.



Immunofluorescent analysis using the Antibody.

Product datasheet

Anti-CD8A Antibody (Clone#EAF-3)

Catalog Number: **BM4379**



antibody and ELISA experts

BOSTER BIOLOGICAL TECHNOLOGY

Building C21, 3rd to 5th Floors, Optics Valley Biopharmaceutical Accelerator,
East Lake High-Tech Development Zone, Wuhan.

Web: www.boster.com **Phone:** 027-67845390/1/2 **Email:** boster@boster.com