

Basic Information

Product Name	Anti-TPH1 Antibody (Clone#EDH-20)
Gene Name	TPH1
Source	Rabbit
Clonality	Monoclonal
Isotype	IgG
Species Reactivity	human, mouse, rat
Tested Application	WB,IHC,IP
Contents	500 ug/ml; Rabbit IgG in phosphate buffered saline, pH 7.4, 150mM NaCl, 0.02% sodium azide, 0.4-0.5 mg/ml BSA and 50% glycerol.
Immunogen	A synthesized peptide derived from human TPH1
Concentration	500 ug/ml
Purification	Affinity-chromatography
Observed MW	51 kDa
Dilution Ratios	Western blot (WB): 1:500-2000 Immunohistochemistry (IHC):1:50-200 ImmunoPrecipitation (IP): 1:50

Storage

12 months from date of receipt, -20°C as supplied. 6 months 2 to 8°C after reconstitution. Avoid repeated freezing and thawing.

Background Information

Tryptophan hydroxylase 1 (TPH1) is an isoenzyme of tryptophan hydroxylase which in humans is encoded by the TPH1 gene. This gene encodes a member of the aromatic amino acid hydroxylase family. The encoded protein catalyzes the first and rate limiting step in the biosynthesis of serotonin, an important hormone and neurotransmitter. Mutations in this gene have been associated with an elevated risk for a variety of diseases and disorders, including schizophrenia, somatic anxiety, anger-related traits, bipolar disorder, suicidal behavior, addictions, and others.

Reference

Product datasheet

Anti-TPH1 Antibody (Clone#EDH-20)

Catalog Number: **BM4413**

BOSTER

antibody and ELISA experts

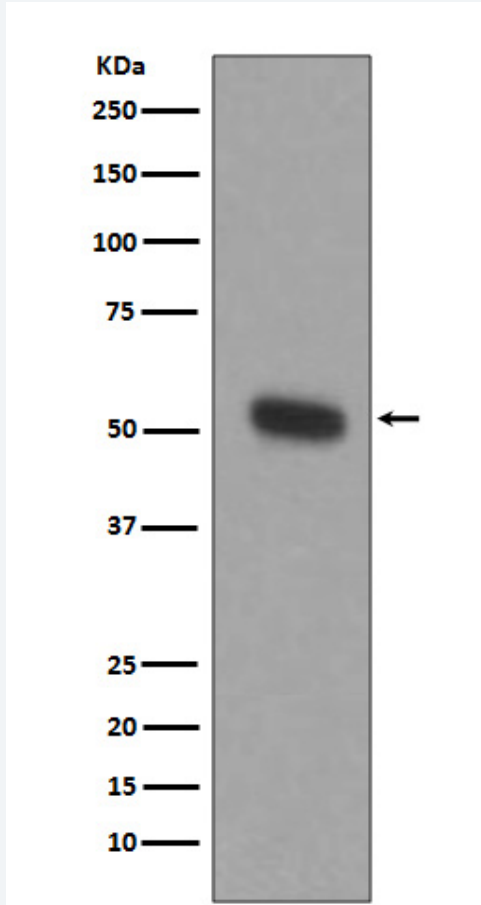
BOSTER BIOLOGICAL TECHNOLOGY

Building C21, 3rd and 4th floors, Optics Valley Biomedical Accelerator,
Wuhan East Lake High-tech Development Zone

Web: www.boster.com **Phone:** 027-67845390 **Email:** boster@boster.com

Anti-TPH1 Antibody (Clone#EDH-20)被引用在2文献中。

Selected Validation Data



Western blot analysis of TPH1 expression in THP-1 cell lysate.