

Basic Information

Product Name	Anti-NSE/ENO2 Antibody (Clone#FBI-5)	
Gene Name	ENO2	
Source	Rabbit	
Clonality	Monoclonal	
Isotype	IgG	
Species Reactivity	human, mouse, rat	
Tested Application	WB, IHC, ICC/IF, FCM	
Contents	500 ug/ml; Rabbit IgG in phosphate buffered saline, pH 7.4, 150mM NaCl, 0.02% sodium azide, 0.4-0.5 mg/ml BSA and 50% glycerol.	
Immunogen	A synthesized peptide derived from human NSE	
Concentration	500 ug/ml	
Purification	Affinity-chromatography	
Observed MW	47 kDa	
Dilution Ratios	Western blot (WB):	1:1000-5000
	Immunohistochemistry (IHC):	1:50-200
	Immunocytochemistry/Immunofluorescence (ICC/IF):	1:50-200
	Flow Cytometry (FCM):	1:20

Storage

12 months from date of receipt, -20°C as supplied. 6 months 2 to 8°C after reconstitution. Avoid repeated freezing and thawing.

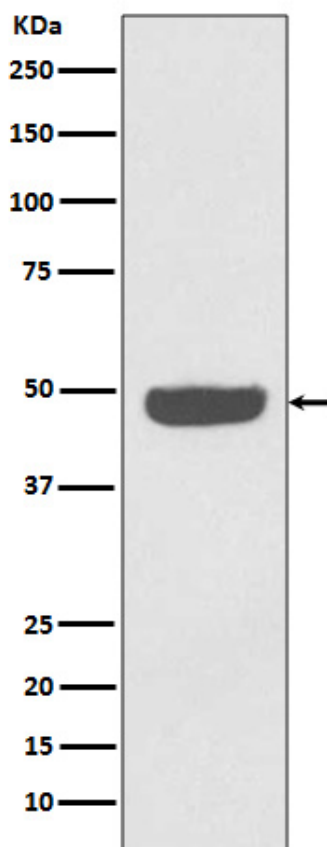
Background Information

NSE (neuron specific enolase), also known as Enolase 2(ENO2), is found in elevated concentrations in plasma in certain neoplasias. The enolases catalyze the interconversion of 2-phosphoglycerate to phosphoenolpyruvate in the glycolytic pathway. ENO2 gene contains 12 exons distributed over 9,213 nucleotides. Human neurone-specific enolase is mapped to chromosome 12p13.

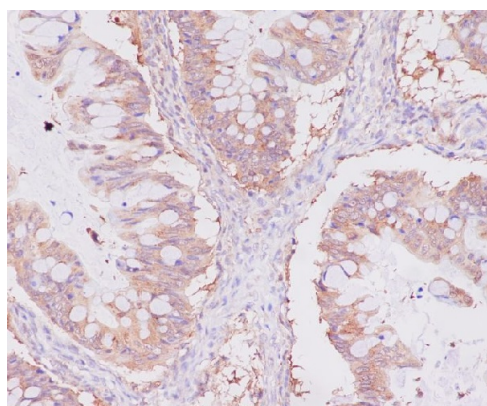
Reference

Anti-NSE/ENO2 Antibody (Clone#FBI-5)被引用在10文献中。

Selected Validation Data



Western blot analysis of NSE expression in HeLa cell lysate.



Immunohistochemical analysis of paraffin-embedded human uterus cancer, using NSE Antibody.

Product datasheet
Anti-NSE/ENO2 Antibody
(Clone#FBI-5)

Catalog Number: BM4495

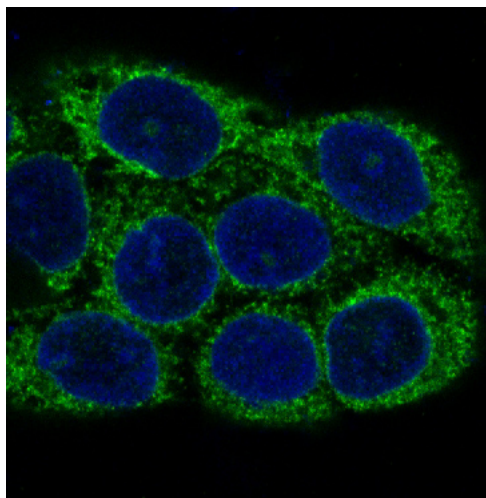
BOSTER[®]

antibody and ELISA experts

BOSTER BIOLOGICAL TECHNOLOGY

Building C21, 3rd to 5th Floors, Optics Valley Biopharmaceutical Accelerator,
East Lake High-Tech Development Zone, Wuhan.

Web: www.boster.com **Phone:** 027-67845390/1/2 **Email:** boster@boster.com



Immunofluorescent analysis of A431 cells, using NSE Antibody.