

Basic Information

Product Name	Anti-P glycoprotein/ABCB1 Antibody (Clone#FDB-1)		
Gene Name	ABCB1		
Source	Rabbit		
Clonality	Monoclonal		
Isotype	IgG		
Species Reactivity	human, mouse, rat		
Tested Application	WB, IHC		
Contents	500 ug/ml; Rabbit IgG in phosphate buffered saline, pH 7.4, 150mM NaCl, 0.02% sodium azide, 0.4-0.5 mg/ml BSA and 50% glycerol.		
Immunogen	A synthesized peptide derived from human P Glycoprotein		
Concentration	500 ug/ml		
Purification	Affinity-chromatography		
Observed MW	130-180 kDa		
Dilution Ratios	Western blot (WB): 1:500-2000 Immunohistochemistry (IHC):1:50-200		

Storage

12 months from date of receipt, -20°C as supplied.

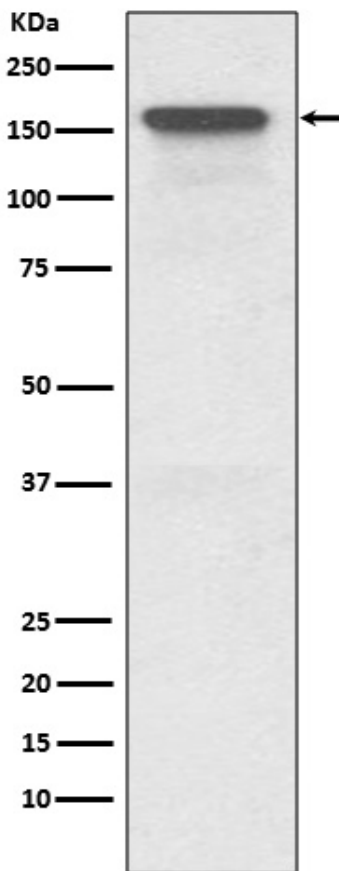
Background Information

P-GP, also called ABCB1 or PGY1, is a glycoprotein that in humans is encoded by the ABCB1 gene. It is mapped to 7q21.12. P-GP is a well-characterized ABC-transporter (which transports a wide variety of substrates across extra- and intracellular membranes) of the MDR/TAP subfamily. It is an important protein of the cell membrane that pumps many foreign substances out of cells. More formally, it is an ATP-dependent drug efflux pump with broad substrate specificity. P-GP is an ATP-dependent drug efflux pump for xenobiotic compounds with broad substrate specificity. It is responsible for decreased drug accumulation in multidrug-resistant cells and often mediates the development of resistance to anticancer drugs. This protein also functions as a transporter in the blood-brain barrier.

Reference

Anti-P glycoprotein/ABCB1 Antibody (Clone#FDB-1)被引用在3文献中。

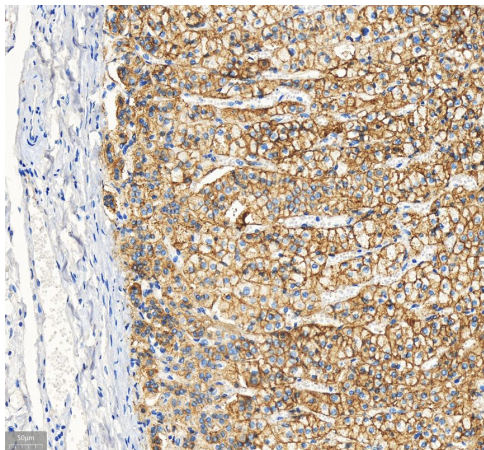
Selected Validation Data



Western blot analysis of P Glycoprotein expression in HeLa cell lysate.

Anti-P glycoprotein/ABCB1 Antibody (Clone#FDB-1)

Catalog Number: BM4508



IHC analysis of P glycoprotein/ABCB1 using anti-P glycoprotein/ABCB1 antibody (BM4508) .

P glycoprotein/ABCB1 was detected in a paraffin-embedded section of human cardiac muscle tissue. The tissue section was incubated with rabbit anti-P glycoprotein/ABCB1 Antibody (BM4508) at a dilution of 1:200 and developed using HRP Conjugated Rabbit IgG Super Vision Assay Kit (Catalog # SV0002) with DAB (Catalog # AR1027) as the chromogen.