

Basic Information

Product Name	Anti-ASC/TMS1/PYCARD Antibody (Clone#FFB-16)	
Gene Name	PYCARD	
Source	Rabbit	
Clonality	Monoclonal	
Isotype	IgG	
Species Reactivity	human	
Tested Application	WB, ICC/IF, FCM	
Contents	500 ug/ml; Rabbit IgG in phosphate buffered saline, pH 7.4, 150mM NaCl, 0.02% sodium azide, 0.4-0.5 mg/ml BSA and 50% glycerol.	
Immunogen	A synthesized peptide derived from human TMS1	
Concentration	500 ug/ml	
Purification	Affinity-chromatography	
Observed MW	22 kDa	
Dilution Ratios	Western blot (WB): 1:500-2000 Immunocytochemistry/Immunofluorescence (ICC/IF): 1:50-200 Flow Cytometry (FCM): 1:20	

Storage

12 months from date of receipt, -20°C as supplied.

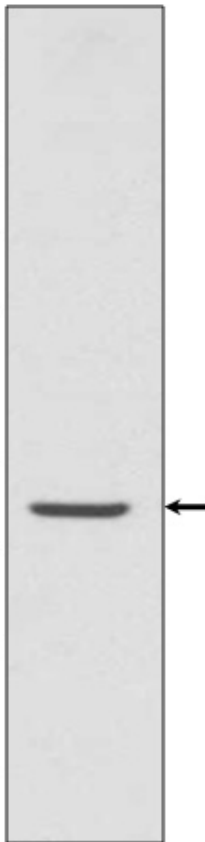
Reference

Anti-ASC/TMS1/PYCARD Antibody (Clone#FFB-16)被引用在1文献中。

Selected Validation Data

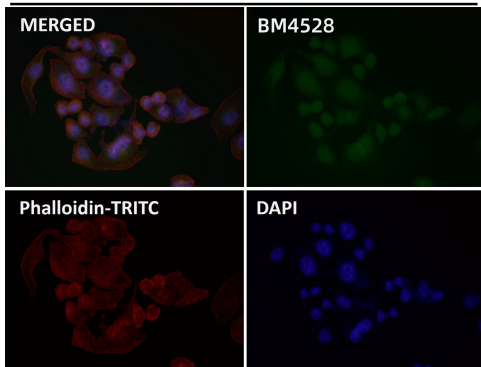
KDa

250 —
150 —
100 —
75 —
50 —
37 —
25 —
20 —
15 —
10 —



Western blot analysis of TMS1 expression in U937 cell lysate.

Hela



Immunofluorescent analysis using the Antibody.