

Basic Information

| | |
|---------------------------|---|
| Product Name | Anti-STAT1 (Phospho-S727) Antibody (Clone#CA-20) |
| Gene Name | STAT1 |
| Source | Rabbit |
| Clonality | Monoclonal |
| Isotype | IgG |
| Species Reactivity | human, mouse, rat |
| Tested Application | WB, IHC |
| Contents | 500 ug/ml; Rabbit IgG in phosphate buffered saline, pH 7.4, 150mM NaCl, 0.02% sodium azide, 0.4-0.5 mg/ml BSA and 50% glycerol. |
| Immunogen | A synthesized peptide derived from human Phospho-STAT1 (S727) |
| Concentration | 500 ug/ml |
| Purification | Affinity-chromatography |
| Observed MW | 91 kDa |
| Dilution Ratios | Western blot (WB): 1:500-2000 Immunohistochemistry (IHC):1:50-200 |

Storage

12 months from date of receipt, -20°C as supplied. 6 months 2 to 8°C after reconstitution. Avoid repeated freezing and thawing.

Background Information

The protein encoded by this gene is a member of the STAT protein family. In response to cytokines and growth factors, STAT family members are phosphorylated by the receptor associated kinases, and then form homo- or heterodimers that translocate to the cell nucleus where they act as transcription activators.

Reference

Anti-STAT1 (Phospho-S727) Antibody (Clone#CA-20)被引用在3文献中。

Selected Validation Data

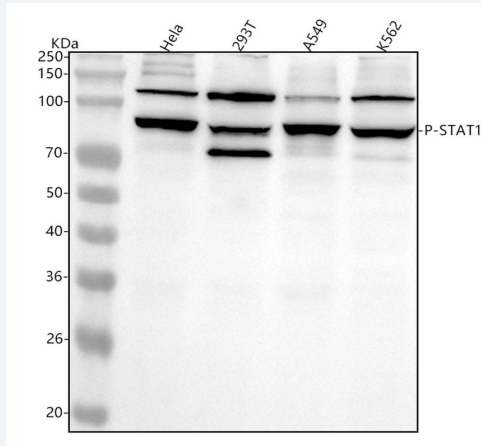


Figure 1. Western blot analysis of anti-STAT1 antibody (BM4541). The sample well of each lane was loaded with 30 ug of sample under reducing conditions.

Lane 1: human HeLa whole cell lysates,
Lane 2: human 293T whole cell lysates,
Lane 3: human A549 whole cell lysates,
Lane 4: human K562 whole cell lysates.

After electrophoresis, proteins were transferred to a membrane. Then the membrane was incubated with rabbit anti-STAT1 antigen affinity purified monoclonal antibody (BM4541) at a dilution of 1:1000 and probed with a goat anti-rabbit IgG-HRP secondary antibody (Catalog # BA1054). The signal is developed using ECL Plus Western Blotting Substrate (Catalog # AR1197). A specific band was detected for STAT1 at approximately 87 kDa. The expected band size for STAT1 is at 87 kDa.

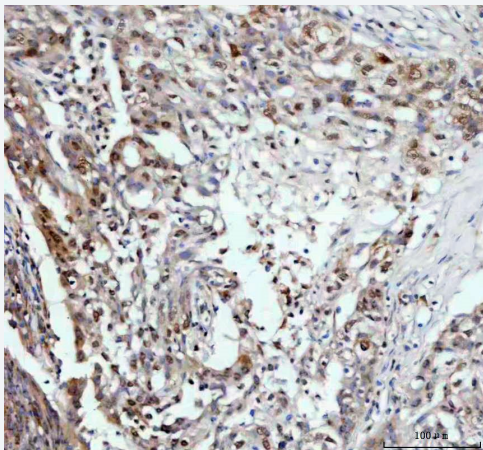


Figure 2. IHC analysis of STAT1 using anti-STAT1 antibody (BM4541) .

STAT1 was detected in a paraffin-embedded section of human breast cancer tissue. The tissue section was incubated with rabbit anti-STAT1 Antibody (BM4541) at a dilution of 1:200 and developed using HRP Conjugated Rabbit IgG Super Vision Assay Kit (Catalog # SV0002) with DAB (Catalog # AR1022) as the chromogen.