

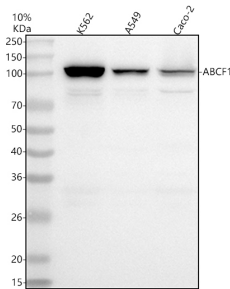
Basic Information

Product Name	Anti-ABCF1 Antibody (Clone#FGE-1)	
Gene Name	ABCF1	
Source	Rabbit	
Clonality	Monoclonal	
Isotype	IgG	
Species Reactivity	human, rat	
Tested Application	WB, IHC, ICC/IF	
Contents	500 ug/ml; Rabbit IgG in phosphate buffered saline, pH 7.4, 150mM NaCl, 0.02% sodium azide, 0.4-0.5 mg/ml BSA and 50% glycerol.	
Immunogen	A synthesized peptide derived from human ABCF1	
Concentration	500 ug/ml	
Purification	Affinity-chromatography	
Observed MW	96 kDa	
Dilution Ratios	Western blot (WB): 1:500-2000 Immunohistochemistry (IHC): 1:50-200 Immunocytochemistry/Immunofluorescence (ICC/IF): 1:50-200	

Storage

12 months from date of receipt, -20°C as supplied.

Selected Validation Data



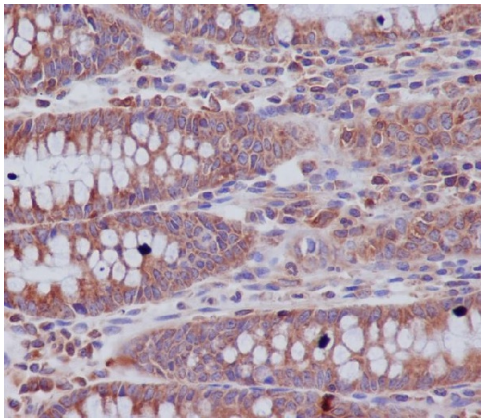
Western blot analysis of anti-ABCF1 antibody (BM4542). The sample well of each lane was loaded with 30 ug of sample under reducing conditions.

Lane 1: human K562 whole cell lysates,

Lane 2: human A549 whole cell lysates,

Lane 3: human Caco-2 whole cell lysates.

After electrophoresis, proteins were transferred to a membrane. Then the membrane was incubated with rabbit anti-ABCF1 antigen affinity purified monoclonal antibody (BM4542) at a dilution of 1:1000 and probed with a goat anti-rabbit IgG-HRP secondary antibody (Catalog # BA1054). The signal is developed using ECL Plus Western Blotting Substrate (Catalog # AR1197). A specific band was detected for ABCF1 at approximately 110 kDa. The expected band size for ABCF1 is at 96 kDa.



Immunohistochemical analysis of paraffin-embedded human colon, using ABCF1 Antibody.