

Basic Information

Product Name	Anti-KGA/GAC/GLS Antibody (Clone#FIA-7)		
Gene Name	GLS		
Source	Rabbit		
Clonality	Monoclonal		
Isotype	IgG		
Species Reactivity	human, mouse, rat		
Tested Application	WB, IHC, ICC/IF		
Contents	500 ug/ml; Rabbit IgG in phosphate buffered saline, pH 7.4, 150mM NaCl, 0.02% sodium azide, 0.4-0.5 mg/ml BSA and 50% glycerol.		
Immunogen	A synthesized peptide derived from human Glutaminase		
Concentration	500 ug/ml		
Purification	Affinity-chromatography		
Observed MW	65-73 kDa		
Dilution Ratios	Western blot (WB):	1:500-2000	
	Immunohistochemistry (IHC):	1:50-200	
	Immunocytochemistry/Immunofluorescence (ICC/IF):	1:50-200	

Storage

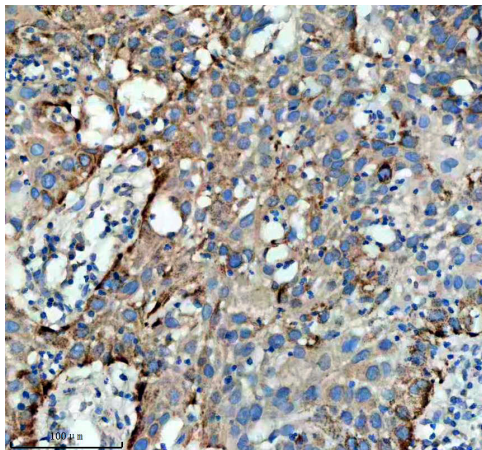
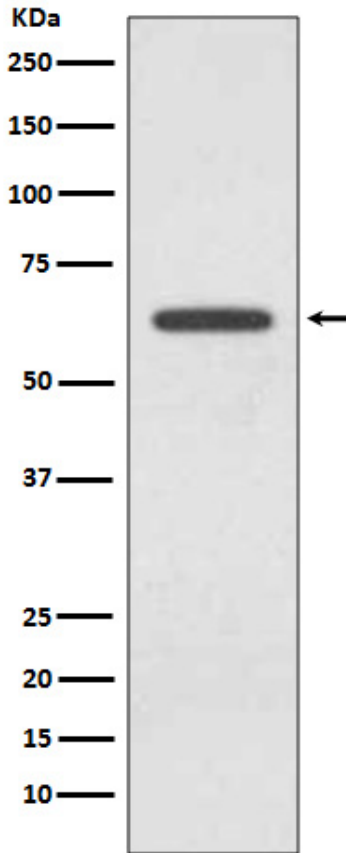
12 months from date of receipt, -20°C as supplied.

Background Information

This gene encodes the K-type mitochondrial glutaminase. The encoded protein is an phosphate-activated amidohydrolase that catalyzes the hydrolysis of glutamine to glutamate and ammonia. This protein is primarily expressed in the brain and kidney plays an essential role in generating energy for metabolism, synthesizing the brain neurotransmitter glutamate and maintaining acid-base balance in the kidney. Alternate splicing results in multiple transcript variants.

Selected Validation Data

Western blot analysis of Glutaminase expression in 293T cell lysate.



IHC analysis of KGA/GAC/GLS using anti-KGA/GAC/GLS antibody (BM4558)

KGA/GAC/GLS was detected in a paraffin-embedded section of human bladder cancer tissue. The tissue section was incubated with rabbit anti-KGA/GAC/GLS Antibody (BM4558) at a dilution of 1:200 and developed using HRP Conjugated Rabbit IgG Super Vision Assay Kit (Catalog # SV0002) with DAB (Catalog # AR1027) as the chromogen.