

Basic Information

Product Name	Anti-Cytochrome c/CYCS Antibody (Clone#GOC-3)	
Gene Name	CYCS	
Source	Rabbit	
Clonality	Monoclonal	
Isotype	IgG	
Species Reactivity	human, mouse, rat	
Tested Application	WB, IHC, ICC/IF, IP	
Contents	500 ug/ml; Rabbit IgG in phosphate buffered saline, pH 7.4, 150mM NaCl, 0.02% sodium azide, 0.4-0.5 mg/ml BSA and 50% glycerol.	
Immunogen	A synthesized peptide derived from human Cytochrome C	
Concentration	500 ug/ml	
Purification	Affinity-chromatography	
Observed MW	14 kDa	
Dilution Ratios	Western blot (WB):	1:500-2000
	Immunohistochemistry (IHC):	1:50-200
	Immunocytochemistry/Immunofluorescence (ICC/IF):	1:50-200
	ImmunoPrecipitation (IP):	1:30

Storage

12 months from date of receipt, -20°C as supplied. 6 months 2 to 8°C after reconstitution. Avoid repeated freezing and thawing.

Background Information

CYCS is also known as CYC, HCS or THC4. This gene encodes a small heme protein that functions as a central component of the electron transport chain in mitochondria. The encoded protein associates with the inner membrane of the mitochondrion where it accepts electrons from cytochrome b and transfers them to the cytochrome oxidase complex. This protein is also involved in initiation of apoptosis. Mutations in this gene are associated with autosomal dominant nonsyndromic thrombocytopenia. Numerous processed pseudogenes of this gene are found throughout the human genome.

Reference

Anti-Cytochrome c/CYCS Antibody (Clone#GOC-3)被引用在9文献中。

Selected Validation Data

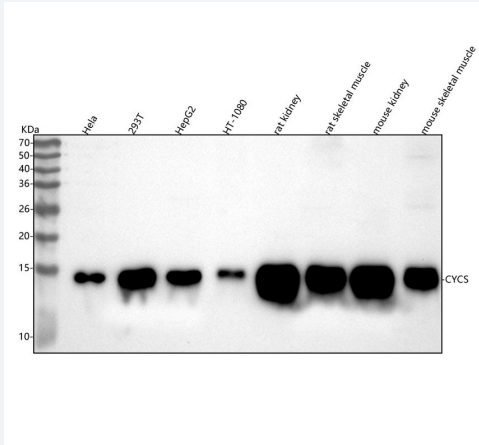


Figure 1. Western blot analysis of anti-Cytochrome c/CYCS antibody (BM4571). The sample well of each lane was loaded with 30 ug of sample under reducing conditions.

Lane 1: human Hela whole cell lysates,

Lane 2: human 293T whole cell lysates,

Lane 3: human HepG2 whole cell lysates,

Lane 4: human HT-1080 whole cell lysates,

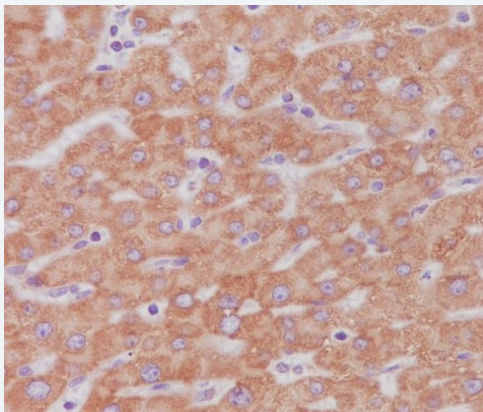
Lane 5: rat kidney tissue lysates,

Lane 6: rat skeletal muscle tissue lysates,

Lane 7: mouse kidney tissue lysates,

Lane 8: mouse skeletal muscle tissue lysates.

After electrophoresis, proteins were transferred to a membrane. Then the membrane was incubated with rabbit anti-Cytochrome c/CYCS antigen affinity purified monoclonal antibody (BM4571) at a dilution of 1:1000 and probed with a goat anti-rabbit IgG-HRP secondary antibody (Catalog # BA1054). The signal is developed using ECL Plus Western Blotting Substrate (Catalog # AR1197). A specific band was detected for Cytochrome c/CYCS at approximately 14 kDa. The expected band size for Cytochrome c/CYCS is at 12 kDa.



Immunohistochemical analysis of paraffin-embedded human liver, using Cytochrome C Antibody.

Product datasheet

**Anti-Cytochrome c/CYCS Antibody
(Clone#GOC-3)**

Catalog Number: BM4571

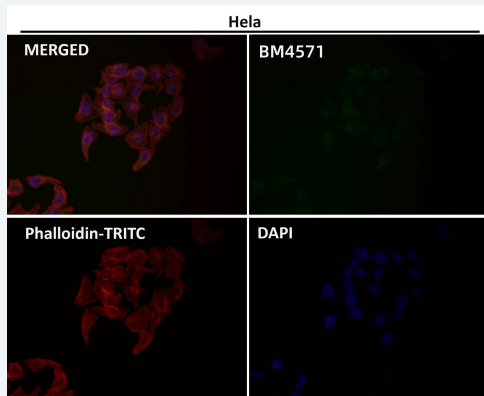
BOSTER

antibody and ELISA experts

BOSTER BIOLOGICAL TECHNOLOGY

Building C21, 3rd and 4th floors, Optics Valley Biomedical Accelerator,
Wuhan East Lake High-tech Development Zone

Web: www.boster.com **Phone:** 027-67845390 **Email:** boster@boster.com



Immunofluorescent analysis using the Antibody.