

## Basic Information

<b>Product Name</b>	Anti-ATG5 Antibody (Clone#GCD-1)	
<b>Gene Name</b>	ATG5	
<b>Source</b>	Rabbit	
<b>Clonality</b>	Monoclonal	
<b>Isotype</b>	IgG	
<b>Species Reactivity</b>	human, mouse, rat	
<b>Tested Application</b>	WB, IHC, ICC/IF, IP	
<b>Contents</b>	500 ug/ml; Rabbit IgG in phosphate buffered saline, pH 7.4, 150mM NaCl, 0.02% sodium azide, 0.4-0.5 mg/ml BSA and 50% glycerol.	
<b>Immunogen</b>	A synthesized peptide derived from human ATG5	
<b>Concentration</b>	500 ug/ml	
<b>Purification</b>	Affinity-chromatography	
<b>Observed MW</b>	55 kDa	
<b>Dilution Ratios</b>	Western blot (WB):	1:500-2000
	Immunohistochemistry (IHC):	1:50-200
	Immunocytochemistry/Immunofluorescence (ICC/IF):	1:50-200
	ImmunoPrecipitation (IP):	1:20

## Storage

12 months from date of receipt, -20°C as supplied.

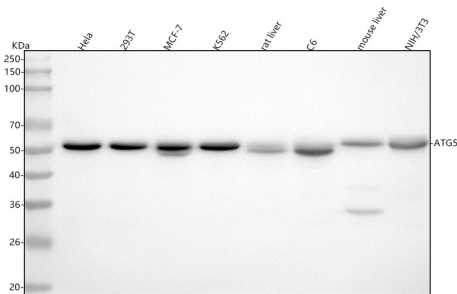
## Background Information

Autophagy protein 5 is a protein that in humans is encoded by the ATG5 gene. It is also known as APG5 or ASP, and this gene is mapped to 6q21. It is found that knockdown of ATG5 in hepatocytes increased triglyceride levels with oleate or a second endogenous stimulus for triglyceride formation. These hepatocytes with ATG5 knockdown also had increased lipid droplet number and size. ATG5 is an E3 ubiquitin ligase which is necessary for autophagy due to its role in autophagosome elongation. It is activated by ATG7 and forms a complex with ATG12 and ATG16L1. This complex is necessary for LC3-1 conjugation to PE to form LC3-II.

## Reference

Anti-ATG5 Antibody (Clone#GCD-1)被引用在13文献中。

## Selected Validation Data



Western blot analysis of anti-ATG5 antibody (BM4603). The sample well of each lane was loaded with 30 ug of sample under reducing conditions.

Lane 1: human Hela whole cell lysates,

Lane 2: human 293T whole cell lysates,

Lane 3: human MCF-7 whole cell lysates,

Lane 4: human K562 whole cell lysates,

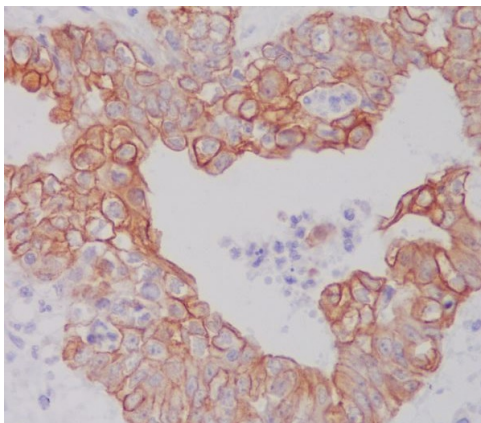
Lane 5: rat liver tissue lysates,

Lane 6: rat C6 whole cell lysates,

Lane 7: mouse liver tissue lysates,

Lane 8: mouse NIH/3T3 whole cell lysates.

After electrophoresis, proteins were transferred to a membrane. Then the membrane was incubated with rabbit anti-ATG5 antigen affinity purified monoclonal antibody (BM4603) at a dilution of 1:1000 and probed with a goat anti-rabbit IgG-HRP secondary antibody (Catalog # BA1054). The signal is developed using ECL Plus Western Blotting Substrate (Catalog # AR1197). A specific band was detected for ATG5 at approximately 55 kDa. The expected band size for ATG5 is at 32 kDa.



Immunohistochemical analysis of paraffin-embedded human ovarian cancer, using ATG5 Antibody.

Product datasheet

**Anti-ATG5 Antibody (Clone#GCD-1)**

**Catalog Number: BM4603**

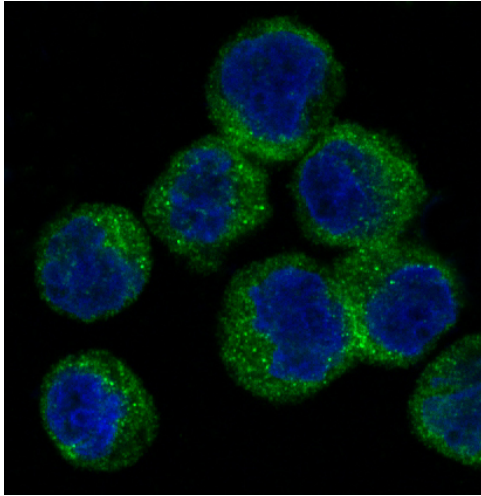


antibody and ELISA experts

**BOSTER BIOLOGICAL TECHNOLOGY**

Building C21, 3rd to 5th Floors, Optics Valley Biopharmaceutical Accelerator,  
East Lake High-Tech Development Zone, Wuhan.

**Web:** [www.boster.com](http://www.boster.com) **Phone:** 027-67845390/1/2 **Email:** [boster@boster.com](mailto:boster@boster.com)



Immunofluorescent analysis of Raji cells, using ATG5 Antibody.