

Basic Information

Product Name	Anti-Cyclin A2/CCNA2 Antibody (Clone#HOC-3)		
Gene Name	CCNA2		
Source	Rabbit		
Clonality	Monoclonal		
Isotype	IgG		
Species Reactivity	human, mouse, rat		
Tested Application	WB, IHC, ICC/IF		
Contents	500 ug/ml; Rabbit IgG in phosphate buffered saline, pH 7.4, 150mM NaCl, 0.02% sodium azide, 0.4-0.5 mg/ml BSA and 50% glycerol.		
Immunogen	A synthesized peptide derived from human Cyclin A2		
Concentration	500 ug/ml		
Purification	Affinity-chromatography		
Observed MW	55 kDa		
Dilution Ratios	Western blot (WB):	1:500-2000	
	Immunohistochemistry (IHC):	1:50-200	
	Immunocytochemistry/Immunofluorescence (ICC/IF):	1:50-200	

Storage

12 months from date of receipt, -20°C as supplied.

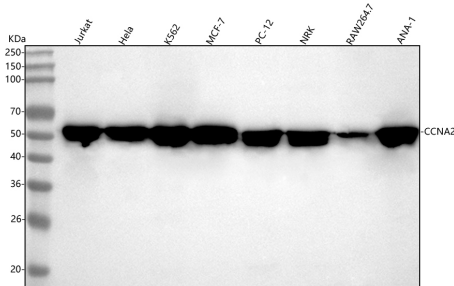
Background Information

The mammalian A-type cyclin family consists of 2 members, cyclin A1(CCNA1) and cyclin A2(CCNA2). Human cyclin A gene is assigned to 4q26-q27. Cyclin A protein is synthesized and localized into the nucleus at the onset of S phase in nontransformed mammalian fibroblasts.

Reference

Anti-Cyclin A2/CCNA2 Antibody (Clone#HOC-3)被引用在1文献中。

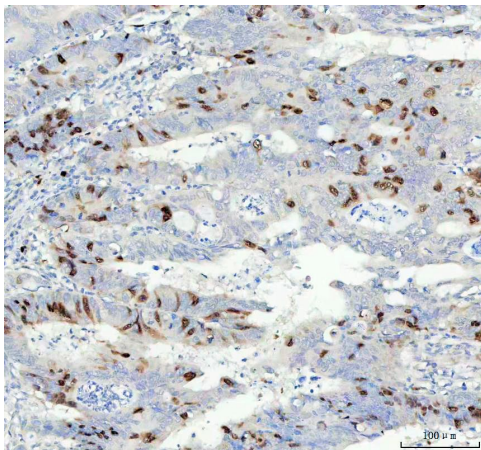
Selected Validation Data



Western blot analysis of anti-Cyclin A2/CCNA2 antibody (BM4673). The sample well of each lane was loaded with 30 ug of sample under reducing conditions.

Lane 1: human Jurkat whole cell lysates,
Lane 2: human Hela whole cell lysates,
Lane 3: human K562 whole cell lysates,
Lane 4: human MCF-7 whole cell lysates,
Lane 5: rat PC-12 whole cell lysates,
Lane 6: rat NRK whole cell lysates,
Lane 7: mouse RAW264.7 whole cell lysates,
Lane 8: mouse ANA-1 whole cell lysates.

After electrophoresis, proteins were transferred to a membrane. Then the membrane was incubated with rabbit anti-Cyclin A2/CCNA2 antigen affinity purified monoclonal antibody (BM4673) at a dilution of 1:1000 and probed with a goat anti-rabbit IgG-HRP secondary antibody (Catalog # BA1054). The signal is developed using ECL Plus Western Blotting Substrate (Catalog # AR1197). A specific band was detected for Cyclin A2/CCNA2 at approximately 55 kDa. The expected band size for Cyclin A2/CCNA2 is at 49 kDa.



IHC analysis of Cyclin A2/CCNA2 using anti-Cyclin A2/CCNA2 antibody (BM4673) .

Cyclin A2/CCNA2 was detected in a paraffin-embedded section of human colorectal adenocarcinoma tissue. The tissue section was incubated with rabbit anti-Cyclin A2/CCNA2 Antibody (BM4673) at a dilution of 1:200 and developed using HRP Conjugated Rabbit IgG Super Vision Assay Kit (Catalog # SV0002) with DAB (Catalog # AR1027) as the chromogen.