

Basic Information

Product Name	Anti-CDC6 (Phospho-S54) Antibody (Clone#HIB-3)		
Gene Name	CDC6		
Source	Rabbit		
Clonality	Monoclonal		
Isotype	IgG		
Species Reactivity	human		
Tested Application	WB, ICC/IF		
Contents	500 ug/ml; Rabbit IgG in phosphate buffered saline, pH 7.4, 150mM NaCl, 0.02% sodium azide, 0.4-0.5 mg/ml BSA and 50% glycerol.		
Immunogen	A synthesized peptide derived from human Phospho-Cdc6 (S54)		
Concentration	500 ug/ml		
Purification	Affinity-chromatography		
Observed MW	63 kDa		
Dilution Ratios	Western blot (WB): 1:500-2000 Immunocytochemistry/Immunofluorescence (ICC/IF):1:50-200		

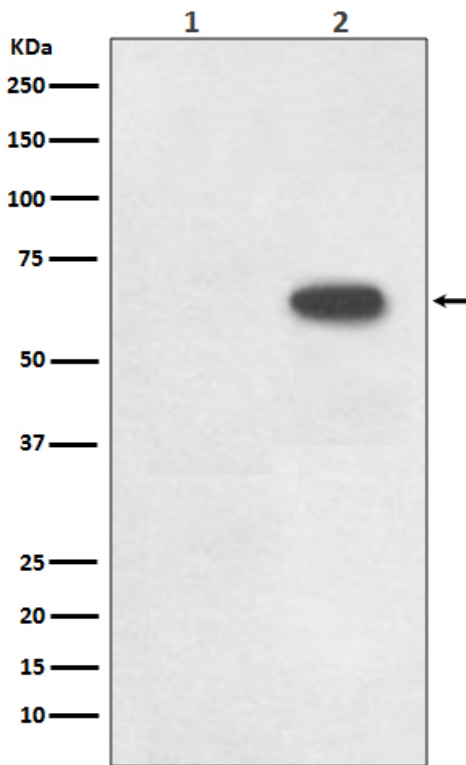
Storage

12 months from date of receipt, -20°C as supplied.

Background Information

Cell division control protein 6 homolog, also called CDC18L or CDC6, is a protein that in humans is encoded by the CDC6 gene. By analysis of somatic cell hybrids and by fluorescence in situ hybridization, this gene is mapped to 17q21.2. The protein encoded by this gene is highly similar to *Saccharomyces cerevisiae* Cdc6, a protein essential for the initiation of DNA replication. And this protein functions as a regulator at the early steps of DNA replication. It localizes in cell nucleus during cell cycle G1, but translocates to the cytoplasm at the start of S phase. The subcellular translocation of this protein during cell cycle is regulated through its phosphorylation by Cdks. Transcription of this protein was reported to be regulated in response to mitogenic signals through transcriptional control mechanism involving E2F proteins. This gene is involved in the initiation of DNA replication.

Selected Validation Data



Western blot analysis of Phospho-Cdc6 (S54) expression in (1) Raji cell lysate; (2) Raji + FBS cell lysate.