

Basic Information

Product Name	Anti-NRF2/NFE2L2(Phospho-S40) Antibody (Clone#IFH-14)	
Gene Name	NFE2L2	
Source	Rabbit	
Clonality	Monoclonal	
Isotype	IgG	
Species Reactivity	human	
Tested Application	WB, IHC, ICC/IF, IP, FCM	
Contents	500 ug/ml; Rabbit IgG in phosphate buffered saline, pH 7.4, 150mM NaCl, 0.02% sodium azide, 0.4-0.5 mg/ml BSA and 50% glycerol.	
Immunogen	A synthesized peptide derived from human Phospho-Nrf2 (S40)	
Concentration	500 ug/ml	
Purification	Affinity-chromatography	
Observed MW	100-110 kDa	
Dilution Ratios	Western blot (WB):	1:500-2000
	Immunohistochemistry (IHC):	1:50-200
	Immunocytochemistry/Immunofluorescence (ICC/IF):	1:50-200
	ImmunoPrecipitation (IP):	1:20
	Flow Cytometry (FCM):	1:20

Storage

12 months from date of receipt, -20°C as supplied. 6 months 2 to 8°C after reconstitution. Avoid repeated freezing and thawing.

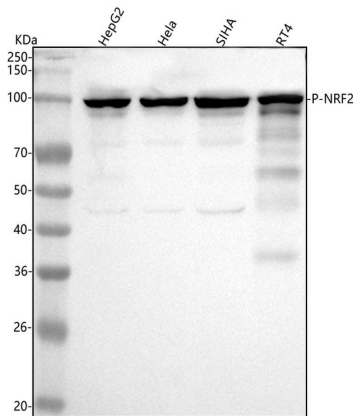
Background Information

NFE2L2(nuclear factor (erythroid-derived 2)-like 2) also known as NRF2 or NFE2-RELATED TRANSCRIPTION FACTOR 2, is a transcription factor that in humans is encoded by the NFE2L2 gene. NFE2, NFE2L1, and NFE2L2 comprise a family of human genes encoding basic leucine zipper (bZIP) transcription factors. NFE2L2 induces the expression of various genes including those that encode for several antioxidant enzymes, and it may play a physiological role in the regulation of oxidative stress. The NFE2L2 gene is located on 2q31.2. The identification of somatic mutations that disrupt the NRF2-KEAP1 interaction to stabilize NRF2 and increase the constitutive transcription of NRF2 target genes indicated that enhanced reactive oxygen species (ROS) detoxification and additional NRF2 functions may in fact be tumorigenic. Oncogene-directed increased expression of Nrf2 is a mechanism for the activation of the Nrf2 antioxidant program evident in primary cells and tissues of mice expressing KRas(G12D) and BRaf(V619E), and in human pancreatic cancer.

Reference

Anti-NRF2/NFE2L2(Phospho-S40) Antibody (Clone#IFH-14)被引用在1文献中。

Selected Validation Data



Western blot analysis of anti-NRF2/NFE2L2 antibody (BM4842). The sample well of each lane was loaded with 30 ug of sample under reducing conditions.

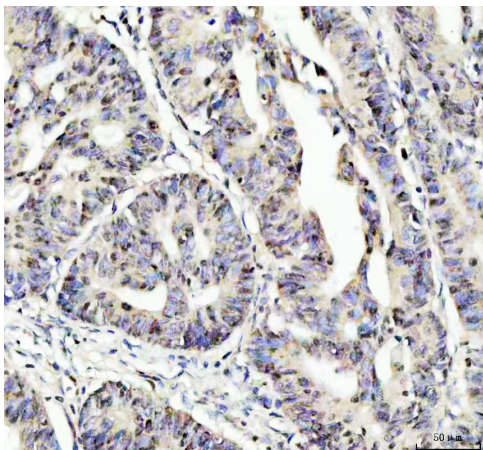
Lane 1: human HepG2 whole cell lysates,

Lane 2: human Hela whole cell lysates,

Lane 3: human SiHa whole cell lysates,

Lane 4: human RT4 whole cell lysates.

After electrophoresis, proteins were transferred to a membrane. Then the membrane was incubated with rabbit anti-NRF2/NFE2L2 antigen affinity purified monoclonal antibody (BM4842) at a dilution of 1:1000 and probed with a goat anti-rabbit IgG-HRP secondary antibody (Catalog # BA1054). The signal is developed using ECL Plus Western Blotting Substrate (Catalog # AR1197). A specific band was detected for NRF2/NFE2L2 at approximately 100 kDa. The expected band size for NRF2/NFE2L2 is at 68 kDa.



IHC analysis of NRF2/NFE2L2 using anti-NRF2/NFE2L2 antibody (BM4842) .

NRF2/NFE2L2 was detected in a paraffin-embedded section of human colorectal adenocarcinoma tissue. The tissue section was incubated with rabbit anti-NRF2/NFE2L2 Antibody (BM4842) at a dilution of 1:200 and developed using HRP Conjugated Rabbit IgG Super Vision Assay Kit (Catalog # SV0002) with DAB (Catalog # AR1027) as the chromogen.

Product datasheet

Anti-NRF2/NFE2L2(Phospho-S40)

Antibody (Clone#IFH-14)

Catalog Number: **BM4842**

BOSTER[®]

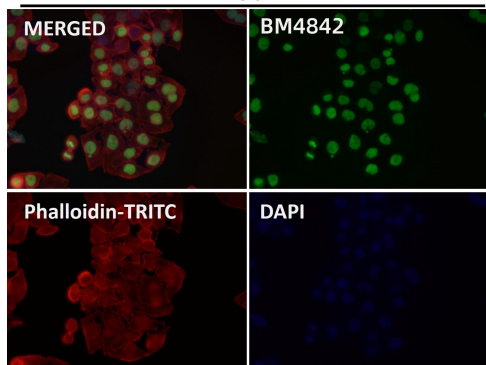
antibody and ELISA experts

BOSTER BIOLOGICAL TECHNOLOGY

Building C21, 3rd to 5th Floors, Optics Valley Biopharmaceutical Accelerator,
East Lake High-Tech Development Zone, Wuhan.

Web: www.boster.com **Phone:** 027-67845390/1/2 **Email:** boster@boster.com

Hela



Immunofluorescent analysis using the Antibody.