

Basic Information

Product Name	Anti-Myelin basic protein/MBP Antibody (Clone#IIE-13)		
Gene Name	MBP		
Source	Rabbit		
Clonality	Monoclonal		
Isotype	IgG		
Species Reactivity	human		
Tested Application	WB, IHC		
Contents	500 ug/ml; Rabbit IgG in phosphate buffered saline, pH 7.4, 150mM NaCl, 0.02% sodium azide, 0.4-0.5 mg/ml BSA and 50% glycerol.		
Immunogen	A synthesized peptide derived from human Myelin Basic Protein		
Concentration	500 ug/ml		
Purification	Affinity-chromatography		
Observed MW	16-22 kDa		
Dilution Ratios	Western blot (WB): 1:500-2000 Immunohistochemistry (IHC):1:50-200		

Storage

12 months from date of receipt, -20°C as supplied. 6 months 2 to 8°C after reconstitution. Avoid repeated freezing and thawing.

Background Information

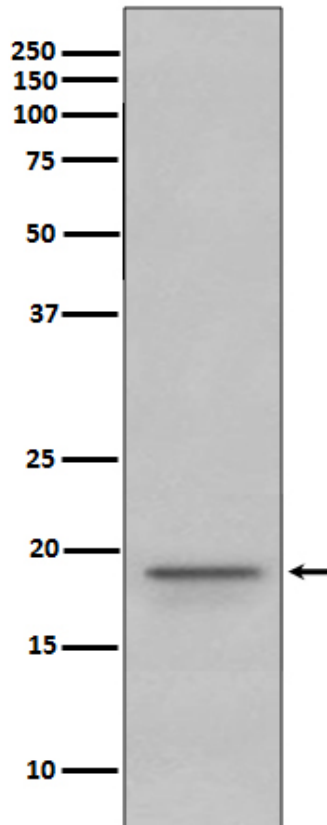
Myelin basic protein(MBP) is a major constituent of the myelin sheath of oligodendrocytes and Schwann cells in the central nervous system and the peripheral nervous system, respectively. It is most abundant in hemopoietic system and contains seven exons distributed over 32-34 kb. MBP isolated from MS brain may differ in charge microheterogeneity which would affect antigenic determinants. MBP is mapped to chromosome 18q22-23. Failure in this gene expression would be correlated in the central white matter with extrapyramidal system degeneration signs. Moreover, it is a candidate autoantigen in the disease multiple sclerosis.

Reference

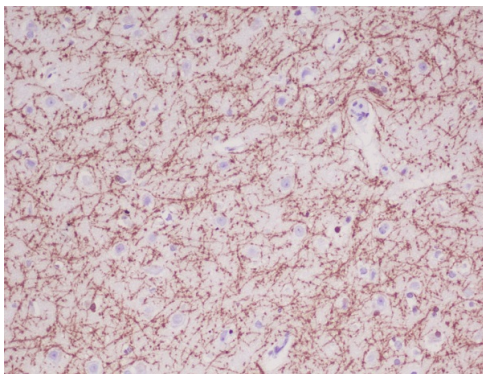
Anti-Myelin basic protein/MBP Antibody (Clone#IIE-13)被引用在1文献中。

Selected Validation Data

KDa



Western blot analysis of Myelin Basic Protein expression in Human fetal brain lysate.



Immunohistochemical analysis of paraffin-embedded human brain, using Myelin Basic Protein Antibody.