

Basic Information

Product Name	Anti-PGC1 Alpha/PPARGC1A Antibody (Clone#AOBC-16)
Gene Name	PPARGC1A
Source	Rabbit
Clonality	Monoclonal
Isotype	IgG
Species Reactivity	human, mouse, rat
Tested Application	WB, ICC/IF
Contents	500 ug/ml; Rabbit IgG in phosphate buffered saline, pH 7.4, 150mM NaCl, 0.02% sodium azide, 0.4-0.5 mg/ml BSA and 50% glycerol.
Immunogen	A synthesized peptide derived from human PGC1 alpha
Concentration	500 ug/ml
Purification	Affinity-chromatography
Observed MW	113 kDa
Dilution Ratios	Western blot (WB): 1:500-2000 Immunocytochemistry/Immunofluorescence (ICC/IF):1:50-200

Storage

12 months from date of receipt, -20°C as supplied. 6 months 2 to 8°C after reconstitution. Avoid repeated freezing and thawing.

Background Information

The protein encoded by this gene is a transcriptional coactivator that regulates the genes involved in energy metabolism. This protein interacts with PPARGgamma, which permits the interaction of this protein with multiple transcription factors. This protein can interact with, and regulate the activities of, cAMP response element binding protein (CREB) and nuclear respiratory factors (NRFs). It provides a direct link between external physiological stimuli and the regulation of mitochondrial biogenesis, and is a major factor that regulates muscle fiber type determination. This protein may be also involved in controlling blood pressure, regulating cellular cholesterol homeostasis, and the development of obesity.

Reference

Anti-PGC1 Alpha/PPARGC1A Antibody (Clone#AOBC-16)被引用在15文献中。

Selected Validation Data

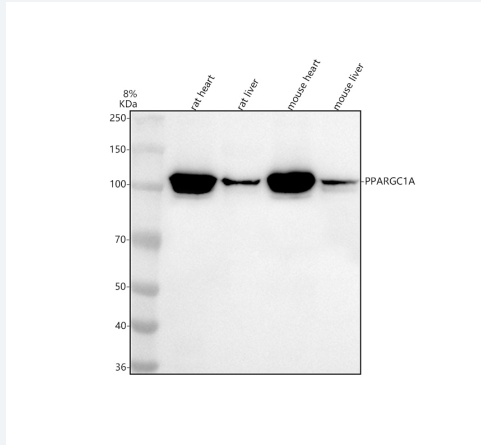


Figure 1. Western blot analysis of anti-PGC1 Alpha/PPARGC1A antibody (BM4898). The sample well of each lane was loaded with 30 ug of sample under reducing conditions.

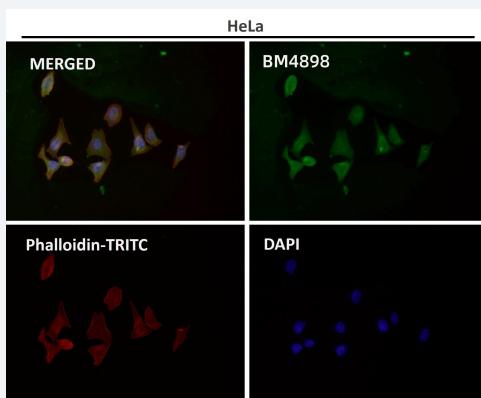
Lane 1: rat heart tissue lysates,

Lane 2: rat liver tissue lysates,

Lane 3: mouse heart tissue lysates,

Lane 4: mouse liver tissue lysates.

After electrophoresis, proteins were transferred to a membrane. Then the membrane was incubated with rabbit anti-PGC1 Alpha/PPARGC1A antigen affinity purified monoclonal antibody (BM4898) at a dilution of 1:1000 and probed with a goat anti-rabbit IgG-HRP secondary antibody (Catalog # BA1054). The signal is developed using ECL Plus Western Blotting Substrate (Catalog # AR1197). A specific band was detected for PGC1 Alpha/PPARGC1A at approximately 113 kDa. The expected band size for PGC1 Alpha/PPARGC1A is at 91 kDa.



Immunofluorescent analysis using the Antibody.