

## Basic Information

<b>Product Name</b>	Anti-Alpha Actinin/ACTN2 Antibody (Clone#AOCB-1)		
<b>Gene Name</b>	ACTN2		
<b>Source</b>	Rabbit		
<b>Clonality</b>	Monoclonal		
<b>Isotype</b>	IgG		
<b>Species Reactivity</b>	human, mouse, rat		
<b>Tested Application</b>	WB, IHC, IP		
<b>Contents</b>	500 ug/ml; Rabbit IgG in phosphate buffered saline, pH 7.4, 150mM NaCl, 0.02% sodium azide, 0.4-0.5 mg/ml BSA and 50% glycerol.		
<b>Immunogen</b>	A synthesized peptide derived from human ACTN2		
<b>Concentration</b>	500ug/ml		
<b>Purification</b>	Affinity-chromatography		
<b>Observed MW</b>	104 kDa		
<b>Dilution Ratios</b>	Western blot (WB): 1:500-2000 Immunohistochemistry (IHC):1:50-200 ImmunoPrecipitation (IP): 1:20		

## Storage

12 months from date of receipt, -20°C as supplied. 6 months 2 to 8°C after reconstitution. Avoid repeated freezing and thawing.

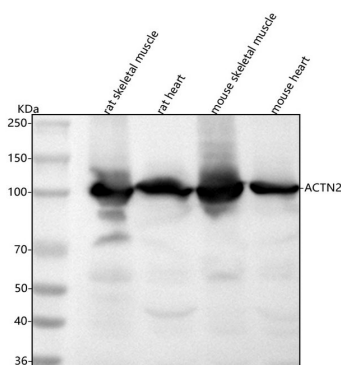
## Background Information

Alpha actinins belong to the spectrin gene superfamily which represents a diverse group of cytoskeletal proteins, including the alpha and beta spectrins and dystrophins. Alpha actinin is an actin-binding protein with multiple roles in different cell types. In nonmuscle cells, the cytoskeletal isoform is found along microfilament bundles and adherens-type junctions, where it is involved in binding actin to the membrane. In contrast, skeletal, cardiac, and smooth muscle isoforms are localized to the Z-disc and analogous dense bodies, where they help anchor the myofibrillar actin filaments. This gene encodes a muscle-specific, alpha actinin isoform that is expressed in both skeletal and cardiac muscles. Several transcript variants encoding different isoforms have been found for this gene.

## Reference

Anti-Alpha Actinin/ACTN2 Antibody (Clone#AOCB-1)被引用在2文献中。

## Selected Validation Data



Western blot analysis of anti-Alpha Actinin/ACTN2 antibody (BM4907). The sample well of each lane was loaded with 30 ug of sample under reducing conditions.

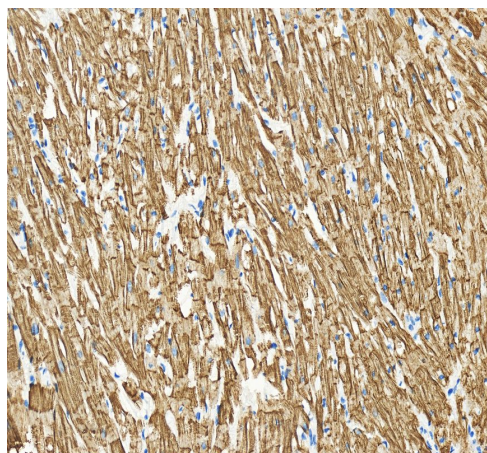
Lane 1: rat skeletal muscle tissue lysates,

Lane 2: rat heart tissue lysates,

Lane 3: mouse skeletal muscle tissue lysates,

Lane 4: mouse heart tissue lysates.

After electrophoresis, proteins were transferred to a membrane. Then the membrane was incubated with rabbit anti-Alpha Actinin/ACTN2 antigen affinity purified monoclonal antibody (BM4907) at a dilution of 1:1000 and probed with a goat anti-rabbit IgG-HRP secondary antibody (Catalog # BA1054). The signal is developed using ECL Plus Western Blotting Substrate (Catalog # AR1197). A specific band was detected for Alpha Actinin/ACTN2 at approximately 104 kDa. The expected band size for Alpha Actinin/ACTN2 is at 104 kDa.



IHC analysis of Alpha Actinin/ACTN2 using anti-Alpha Actinin/ACTN2 antibody (BM4907) .

Alpha Actinin/ACTN2 was detected in a paraffin-embedded section of human cardiac muscle tissue. The tissue section was incubated with rabbit anti-Alpha Actinin/ACTN2 Antibody (BM4907) at a dilution of 1:200 and developed using HRP Conjugated Rabbit IgG Super Vision Assay Kit (Catalog # SV0002) with DAB (Catalog # AR1027) as the chromogen.