

Basic Information

Product Name	Anti-Parvalbumin/PVALB Antibody (Clone#AOFB-16)		
Gene Name	PVALB		
Source	Rabbit		
Clonality	Monoclonal		
Isotype	IgG		
Species Reactivity	human, mouse, rat		
Tested Application	WB, IHC, IP		
Contents	500 ug/ml; Rabbit IgG in phosphate buffered saline, pH 7.4, 150mM NaCl, 0.02% sodium azide, 0.4-0.5 mg/ml BSA and 50% glycerol.		
Immunogen	A synthesized peptide derived from human Parvalbumin		
Concentration	500 ug/ml		
Purification	Affinity-chromatography		
Observed MW	12 kDa		
Dilution Ratios	Western blot (WB): 1:500-2000 Immunohistochemistry (IHC):1:50-200 ImmunoPrecipitation (IP): 1:20		

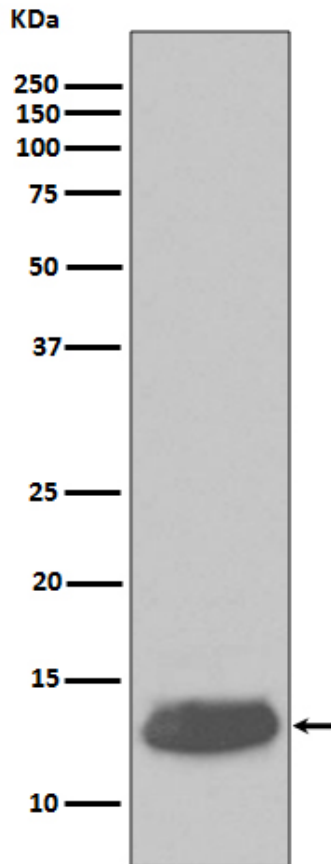
Storage

12 months from date of receipt, -20°C as supplied.

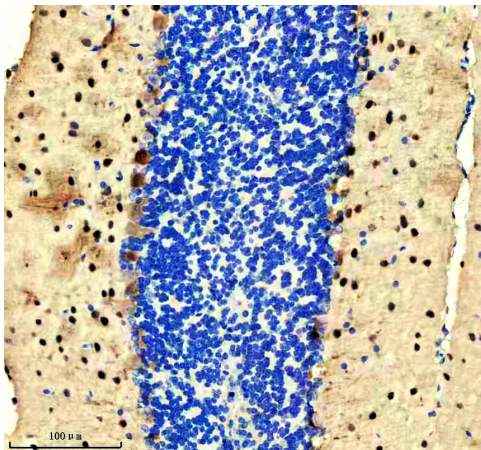
Background Information

The protein encoded by this gene is a high affinity calcium ion-binding protein that is structurally and functionally similar to calmodulin and troponin C. The encoded protein is thought to be involved in muscle relaxation.

Selected Validation Data



Western blot analysis of Parvalbumin expression in human cerebellum lysate.



IHC analysis of PVALB using anti-PVALB antibody (BM4937). PVALB was detected in a paraffin-embedded section of mouse cerebellum tissue. The tissue section was incubated with rabbit anti-PVALB Antibody (BM4937) at a dilution of 1:200 and developed using HRP Conjugated Rabbit IgG Super Vision Assay Kit (Catalog # SV0002) with DAB (Catalog # AR1027) as the chromogen.