

## Basic Information

<b>Product Name</b>	Anti-uPA/Urokinase/PLAU Antibody (Clone#AABC-16)		
<b>Gene Name</b>	PLAU		
<b>Source</b>	Rabbit		
<b>Clonality</b>	Monoclonal		
<b>Isotype</b>	IgG		
<b>Species Reactivity</b>	human, mouse, rat		
<b>Tested Application</b>	WB, IHC		
<b>Contents</b>	500 ug/ml; Rabbit IgG in phosphate buffered saline, pH 7.4, 150mM NaCl, 0.02% sodium azide, 0.4-0.5 mg/ml BSA and 50% glycerol.		
<b>Immunogen</b>	A synthesized peptide derived from human Urokinase		
<b>Concentration</b>	500 ug/ml		
<b>Purification</b>	Affinity-chromatography		
<b>Observed MW</b>	49 kDa		
<b>Dilution Ratios</b>	Western blot (WB): 1:500-2000 Immunohistochemistry (IHC):1:50-200		

## Storage

12 months from date of receipt, -20°C as supplied.

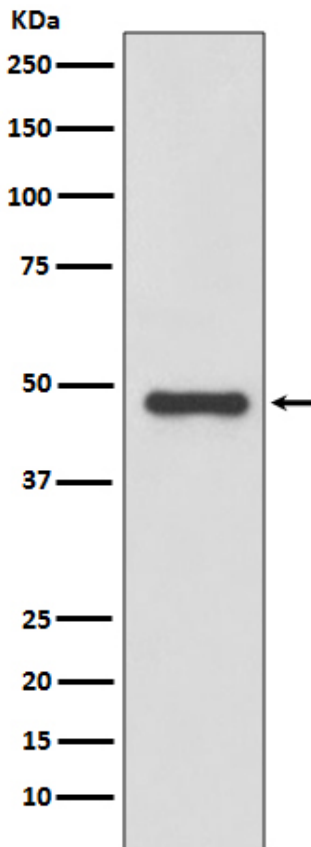
## Background Information

Urokinase, also known as urokinase-type plasminogen activator (uPA), is a serine protease present in humans and other animals. This gene encodes a secreted serine protease that converts plasminogen to plasmin. The encoded preproprotein is proteolytically processed to generate A and B polypeptide chains. These chains associate via a single disulfide bond to form the catalytically inactive high molecular weight urokinase-type plasminogen activator (HMW-uPA). HMW-uPA can be further processed into the catalytically active low molecular weight urokinase-type plasminogen activator (LMW-uPA). This low molecular weight form does not bind to the urokinase-type plasminogen activator receptor. Mutations in this gene may be associated with Quebec platelet disorder and late-onset Alzheimer's disease. Alternative splicing results in multiple transcript variants, at least one of which encodes an isoform that is proteolytically processed.

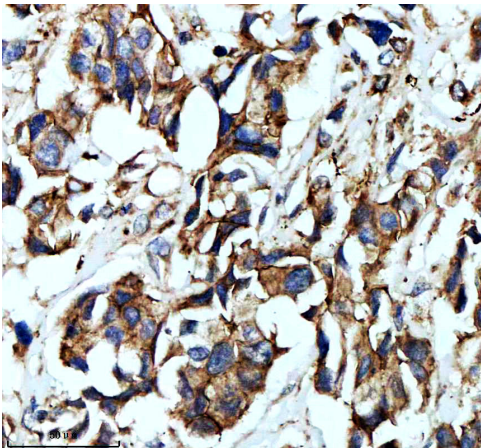
## Reference

Anti-uPA/Urokinase/PLAU Antibody (Clone#AABC-16)被引用在5文献中。

## Selected Validation Data



Western blot analysis of Urokinase expression in LnCaP cell lysate.



IHC analysis of PLAU using anti-PLAU antibody (BM5000) .

PLAU was detected in a paraffin-embedded section of human breast cancer tissue. The tissue section was incubated with rabbit anti-PLAU Antibody (BM5000) at a dilution of 1:200 and developed using HRP Conjugated Rabbit IgG Super Vision Assay Kit (Catalog # SV0002) with DAB (Catalog # AR1027) as the chromogen.

Product datasheet

**Anti-uPA/Urokinase/PLAU Antibody  
(Clone#AABC-16)**

**Catalog Number: BM5000**



antibody and ELISA experts

**BOSTER BIOLOGICAL TECHNOLOGY**

Building C21, 3rd to 5th Floors, Optics Valley Biopharmaceutical Accelerator,  
East Lake High-Tech Development Zone, Wuhan.

**Web:** [www.boster.com](http://www.boster.com) **Phone:** 027-67845390/1/2 **Email:** [boster@boster.com](mailto:boster@boster.com)