

Basic Information

Product Name	Anti-ATF4 Antibody (Clone#HCI-1)	
Gene Name	ATF4	
Source	Rabbit	
Clonality	Monoclonal	
Isotype	IgG	
Species Reactivity	human, mouse, rat	
Tested Application	WB, IHC, ICC/IF, IP, FCM	
Contents	500 ug/ml; Rabbit IgG in phosphate buffered saline, pH 7.4, 150mM NaCl, 0.02% sodium azide, 0.4-0.5 mg/ml BSA and 50% glycerol.	
Immunogen	A synthesized peptide derived from human ATF4	
Concentration	500 ug/ml	
Purification	Affinity-chromatography	
Observed MW	45-50 kDa	
Dilution Ratios	Western blot (WB):	1:500-2000
	Immunohistochemistry (IHC):	1:50-200
	Immunocytochemistry/Immunofluorescence (ICC/IF):	1:50-200
	ImmunoPrecipitation (IP):	1:20
	Flow Cytometry (FCM):	1:20

Storage

12 months from date of receipt, -20°C as supplied. 6 months 2 to 8°C after reconstitution. Avoid repeated freezing and thawing.

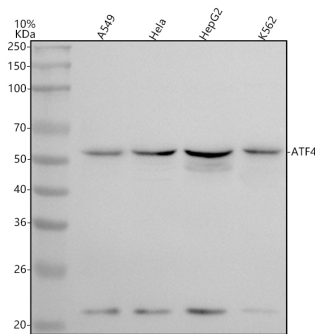
Background Information

ATF4, Activating Transcription Factor 4, is also known as CREB2. ATF4 belongs to the large ATF/CREB family of transcription factors which bind DNA via their basic region and dimerize via their leucine zipper domain to form a variety of homo- and heterodimers to regulate gene transcription. It is identified that members of this family share significant sequence similarity within a leucine zipper DNA-binding motif and an adjacent basic region. The ATF4 gene is mapped to chromosome 22. Unlike CREB, which activates transcription from CRE-containing promoters, CREB2 functions as a specific repressor of CRE-dependent transcription. The transcriptional repressor activity resides within the C-terminal leucine zipper and basic domain region of the CREB2 protein.

Reference

Anti-ATF4 Antibody (Clone#HCl-1)被引用在3文献中。

Selected Validation Data



Western blot analysis of anti-ATF4 antibody (BM5179). The sample well of each lane was loaded with 30 ug of sample under reducing conditions.

Lane 1: human A549 whole cell lysates,

Lane 2: human Hela whole cell lysates,

Lane 3: human HepG2 whole cell lysates,

Lane 4: human K562 whole cell lysates.

After electrophoresis, proteins were transferred to a membrane.

Then the membrane was incubated with rabbit anti-ATF4 antigen

affinity purified monoclonal antibody (BM5179) at a dilution of

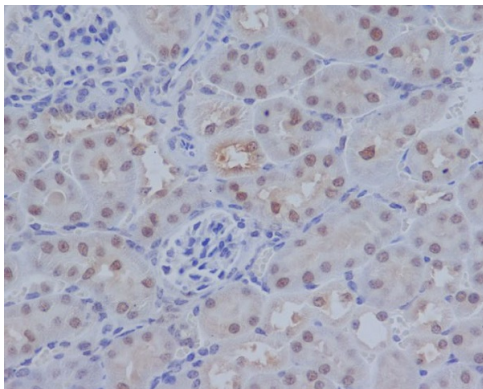
1:1000 and probed with a goat anti-rabbit IgG-HRP secondary

antibody (Catalog # BA1054). The signal is developed using ECL

Plus Western Blotting Substrate (Catalog # AR1197). A specific

band was detected for ATF4 at approximately 55 kDa. The expected

band size for ATF4 is at 39 kDa.



Immunohistochemical analysis of paraffin-embedded mouse kidney, using ATF4 Antibody.

Product datasheet

Anti-ATF4 Antibody (Clone#HCI-1)

Catalog Number: **BM5179**

BOSTER[®]

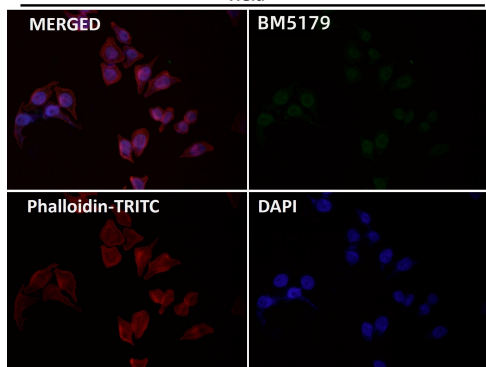
antibody and ELISA experts

BOSTER BIOLOGICAL TECHNOLOGY

Building C21, 3rd to 5th Floors, Optics Valley Biopharmaceutical Accelerator,
East Lake High-Tech Development Zone, Wuhan.

Web: www.boster.com **Phone:** 027-67845390/1/2 **Email:** boster@boster.com

Hela



Immunofluorescent analysis using the Antibody.