

Basic Information

Product Name	Anti-GFP-Tag Antibody	
Gene Name	GFP	
Source	Mouse	
Clonality	Monoclonal	
Isotype	IgG1	
Species Reactivity	human, mouse, rat, All species	
Tested Application	WB	
Contents	Rabbit IgG in phosphate buffered saline,pH7.4,150mM NaCl,0.02% sodium azide and 50% glycerol.	
Immunogen	Full-length GFP protein	
Concentration	500ug/ml	
Purification	Affinity-chromatography	
Observed MW	27 kDa	
Dilution Ratios	Western blot (WB):	1:1000-5000
	Immunohistochemistry (IHC):	1:50-200
	Immunocytochemistry/Immunofluorescence (ICC/IF):	1:50-200
	ImmunoPrecipitation (IP):	1:100

Storage

12 months from date of receipt, -20°C as supplied. 6 months 2 to 8°C after reconstitution. Avoid repeated freezing and thawing.

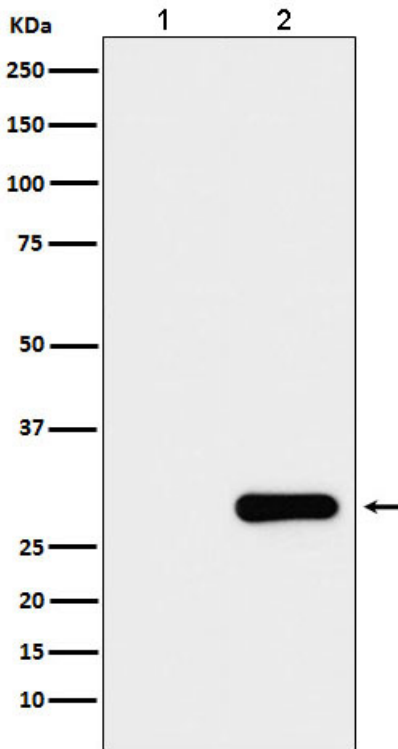
Background Information

Green fluorescent protein(GFP) has been engineered to produce a vast number of variously colored mutants, fusion proteins, and biosensors. Fluorescent proteins and its mutated allelic forms, blue, cyan and yellow have become a useful and ubiquitous tool for making chimeric proteins, where they function as a fluorescent protein tag. Typically they tolerate N- and C-terminal fusion to a broad variety of proteins.

Reference

Anti-GFP-Tag Antibody被引用在1文献中。

Selected Validation Data



Western blot analysis of GFP protein expression in (1) 293T cell lysate; (2) 293T cell transfected with GFP protein lysate.