

Basic Information

Product Name	Anti-BAD (Phospho-S112) Antibody (Clone#AEBH-2)
Gene Name	BAD
Source	Rabbit
Clonality	Monoclonal
Isotype	IgG
Species Reactivity	human, mouse, rat
Tested Application	WB, IP
Contents	500 ug/ml; Rabbit IgG in phosphate buffered saline, pH 7.4, 150mM NaCl, 0.02% sodium azide, 0.4-0.5 mg/ml BSA and 50% glycerol.
Immunogen	A synthesized peptide derived from human Bad Promotes cell death. Successfully competes for the binding to Bcl-X (L), Bcl-2 and Bcl-W, thereby affecting the level of heterodimerization of these proteins with BAX.
Concentration	500 ug/ml
Purification	Affinity-chromatography
Observed MW	23 kDa
Dilution Ratios	Western blot (WB): 1:500-2000 ImmunoPrecipitation (IP):1:20

Storage

12 months from date of receipt, -20°C as supplied. 6 months 2 to 8°C after reconstitution. Avoid repeated freezing and thawing.

Background Information

Bad is a proapoptotic member of the Bcl-2 family that promotes cell death by displacing Bax from binding to Bcl-2 and Bcl-xL (1,2). Survival factors, such as IL-3, inhibit the apoptotic activity of Bad by activating intracellular signaling pathways that result in the phosphorylation of Bad at Ser112 and Ser136 (2). Phosphorylation at these sites promotes binding of Bad to 14-3-3 proteins to prevent an association between Bad with Bcl-2 and Bcl-xL (2). Akt phosphorylates Bad at Ser136 to promote cell survival (3,4). Bad is phosphorylated at Ser112 both in vivo and in vitro by p90RSK (5,6) and mitochondria-anchored PKA (7). Phosphorylation at Ser155 in the BH3 domain by PKA plays a critical role in blocking the dimerization of Bad and Bcl-xL (8-10).

Selected Validation Data

Product datasheet

Anti-BAD (Phospho-S112) Antibody (Clone#AEBH-2)

Catalog Number: **BM5507**

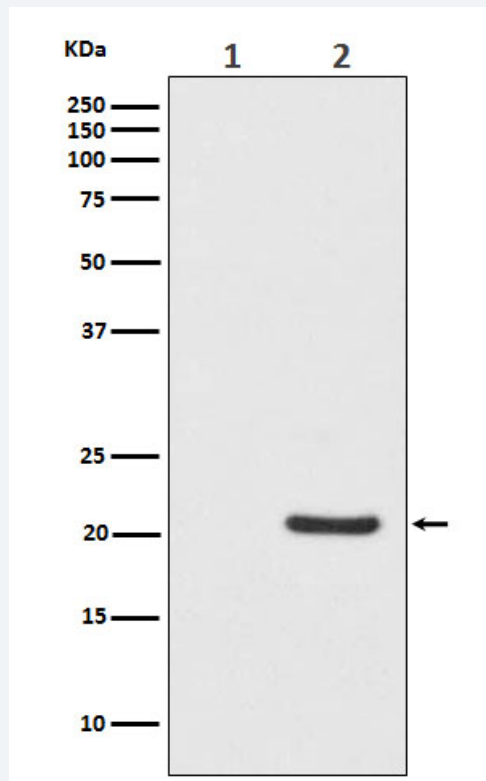
BOSTER

antibody and ELISA experts

BOSTER BIOLOGICAL TECHNOLOGY

Building C21, 3rd and 4th floors, Optics Valley Biomedical Accelerator,
Wuhan East Lake High-tech Development Zone

Web: www.boster.com Phone: 027-67845390 Email: boster@boster.com



Western blot analysis of Phospho-Bad (S112) expression in (1) HeLa cell lysate; (2) HeLa cell treated with Calcyculin A lysate.