

Basic Information

Product Name	Anti-DRD3 Antibody (Clone#18D37)
Gene Name	DRD3
Source	Rabbit
Clonality	Monoclonal
Isotype	IgG
Species Reactivity	human, mouse, rat
Tested Application	WB, IHC
Contents	500 ug/ml; Rabbit IgG in phosphate buffered saline, pH 7.4, 150mM NaCl, 0.02% sodium azide, 0.4-0.5 mg/ml BSA and 50% glycerol.
Immunogen	A synthesized peptide derived from human Dopamine Receptor D3
Concentration	500 ug/ml
Observed MW	49 kDa
Dilution Ratios	Western blot (WB): 1:500-2000 Immunohistochemistry (IHC):1:50-200

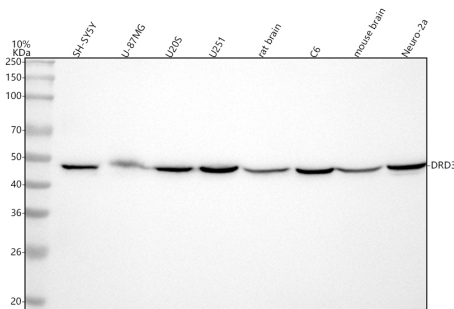
Storage

12 months from date of receipt, -20°C as supplied.

Background Information

This is one of the five types (D1 to D5) of receptors for dopamine. The activity of this receptor is mediated by G proteins which inhibit adenyl cyclase. Promotes cell proliferation.

Selected Validation Data



Western blot analysis of anti-DRD3 antibody (BM5527). The sample well of each lane was loaded with 30 ug of sample under reducing conditions.

Lane 1: human SH-SY5Y whole cell lysates,

Lane 2: human U-87 MG whole cell lysates,

Lane 3: human U2OS whole cell lysates,

Lane 4: human U251 whole cell lysates,

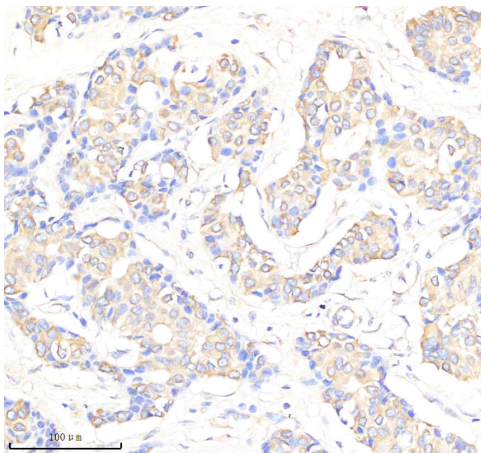
Lane 5: rat brain tissue lysates,

Lane 6: rat C6 whole cell lysates,

Lane 7: mouse brain tissue lysates,

Lane 8: mouse Neuro-2a whole cell lysates.

After electrophoresis, proteins were transferred to a membrane. Then the membrane was incubated with rabbit anti-DRD3 antigen affinity purified monoclonal antibody (BM5527) at a dilution of 1:1000 and probed with a goat anti-rabbit IgG-HRP secondary antibody (Catalog # BA1054). The signal is developed using ECL Plus Western Blotting Substrate (Catalog # AR1197). A specific band was detected for DRD3 at approximately 48 kDa. The expected band size for DRD3 is at 44 kDa.



IHC analysis of DRD3 using anti-DRD3 antibody (BM5527) .

DRD3 was detected in a paraffin-embedded section of human breast cancer tissue. The tissue section was incubated with rabbit anti-DRD3 Antibody (BM5527) at a dilution of 1:200 and developed using HRP Conjugated Rabbit IgG Super Vision Assay Kit (Catalog # SV0002) with DAB (Catalog # AR1027) as the chromogen.