

Basic Information

Product Name	Anti-EIF4A1 Antibody (Clone#18E95)	
Gene Name	EIF4A1	
Source	Rabbit	
Clonality	Monoclonal	
Isotype	IgG	
Species Reactivity	human, mouse, rat	
Tested Application	WB, ICC/IF, FCM	
Contents	500 ug/ml; Rabbit IgG in phosphate buffered saline, pH 7.4, 150mM NaCl, 0.02% sodium azide, 0.4-0.5 mg/ml BSA and 50% glycerol.	
Immunogen	A synthesized peptide derived from human eIF4A1	
Concentration	500 ug/ml	
Observed MW	46 kDa	
Dilution Ratios	Western blot (WB):	1:500-2000
	Immunocytochemistry/Immunofluorescence (ICC/IF):	1:50-200
	Flow Cytometry (FCM):	1:50

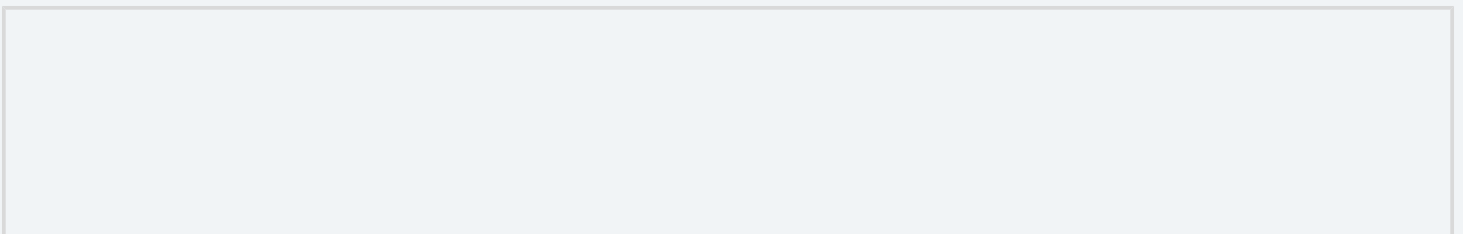
Storage

12 months from date of receipt, -20°C as supplied. 6 months 2 to 8°C after reconstitution. Avoid repeated freezing and thawing.

Background Information

Eukaryotic initiation factor 4A-I is a protein that in humans is encoded by the EIF4A1 gene. It is mapped to 17p13.1. EIF4A1 has been shown to interact with EIF4E and eukaryotic translation initiation factor 4 gamma.

Selected Validation Data



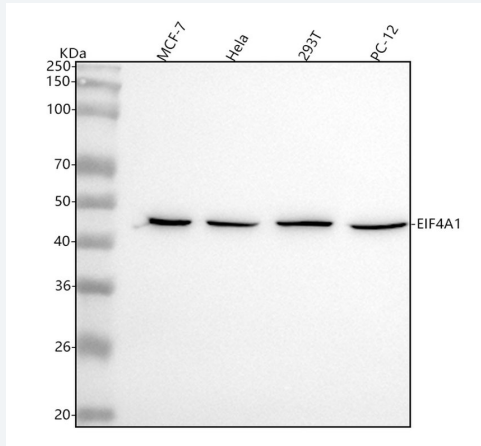


Figure 1. Western blot analysis of anti-EIF4A1 antibody (BM5594). The sample well of each lane was loaded with 30 ug of sample under reducing conditions.

Lane 1: human MCF-7 whole cell lysates,

Lane 2: human HeLa whole cell lysates,

Lane 3: human 293T whole cell lysates,

Lane 4: rat PC-12 whole cell lysates.

After electrophoresis, proteins were transferred to a membrane. Then the membrane was incubated with rabbit anti-EIF4A1 antigen affinity purified monoclonal antibody (BM5594) at a dilution of 1:1000 and probed with a goat anti-rabbit IgG-HRP secondary antibody (Catalog # BA1054). The signal is developed using ECL Plus Western Blotting Substrate (Catalog # AR1197). A specific band was detected for EIF4A1 at approximately 46 kDa. The expected band size for EIF4A1 is at 46 kDa.