

Basic Information

Product Name	Anti-Prolactin/PRL Antibody (Clone#19P46)
Gene Name	PRL
Source	Rabbit
Clonality	Monoclonal
Isotype	IgG
Species Reactivity	human
Tested Application	WB
Contents	500 ug/ml; Rabbit IgG in phosphate buffered saline, pH 7.4, 150mM NaCl, 0.02% sodium azide, 0.4-0.5 mg/ml BSA and 50% glycerol.
Immunogen	A synthesized peptide derived from human Prolactin
Concentration	500 ug/ml
Observed MW	26 kDa
Dilution Ratios	Western blot (WB):1:500-2000

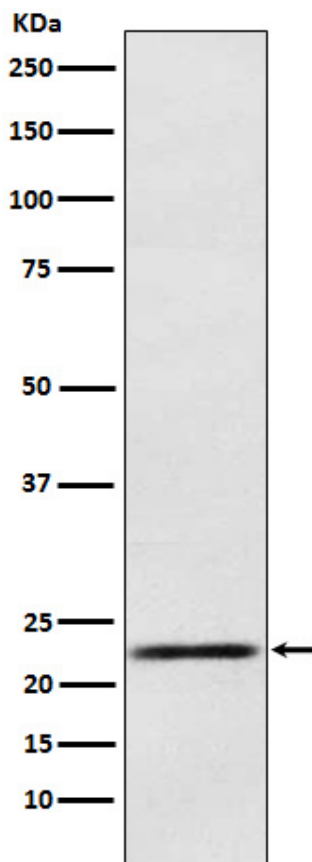
Storage

12 months from date of receipt, -20°C as supplied. 6 months 2 to 8°C after reconstitution. Avoid repeated freezing and thawing.

Background Information

Various hormones are secreted from the anterior pituitary during development and growth. Prolactin is a growth factor secreted by the anterior pituitary that is necessary for the proliferation and differentiation of the mammary glands.

Selected Validation Data



Western blot analysis of Prolactin expression in Human fetal pituitary lysate.