

Basic Information

Product Name	Anti-IL10 Antibody (Clone#AFIE-9)		
Gene Name	IL10		
Source	Rat		
Clonality	Monoclonal		
Isotype	IgG1, κ		
Species Reactivity	mouse		
Tested Application	WB, IHC		
Contents	200 ug/ml antibody with PBS , 0.02% NaN ₃ , 1 mg BSA and 50% glycerol.		
Immunogen	Recombinant mouse IL-10		
Concentration	200 ug/ml		
Purification	protein G purified.		
Dilution Ratios	Western blot (WB): 1:500-2000 Immunohistochemistry (IHC): 1:50-400 (Boiling the paraffin sections in 10mM citrate buffer,pH6.0,or PH8.0 EDTA repair liquid for 20 mins is required for the staining of formalin/paraffin sections.) Optimal working dilutions must be determined by end user.		

Storage

12 months from date of receipt, -20°C as supplied. 6 months 2 to 8°C after reconstitution. Avoid repeated freezing and thawing.

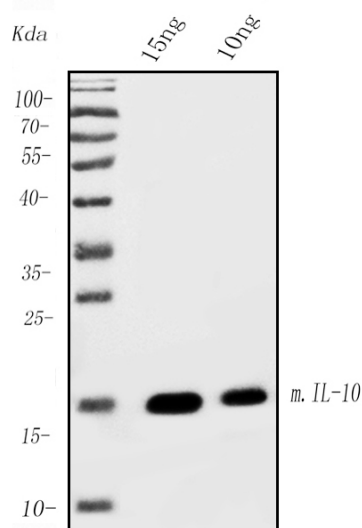
Background Information

Interleukin-10 (IL-10 or IL10), also known as human cytokine synthesis inhibitory factor (CSIF), is an anti-inflammatory cytokine. In humans IL-10 is encoded by the IL10 gene. It is capable of inhibiting synthesis of pro-inflammatory cytokines like IFN-gamma, IL-2, IL-3, TNFalpha and GM-CSF made by cells such as macrophages and regulatory T-cells. IL-10 also displays potent abilities to suppress the antigen presentation capacity of antigen presenting cells. Kim et al. (1992) showed that the mouse IL 10 gene contains 5 exons and spans about 5.2 kb of genomic DNA. Eskdale et al. (1997) mapped the IL10 gene to the junction between 1q31 and 1q32.

Reference

Anti-IL10 Antibody (Clone#AFIE-9)被引用在6文献中。

Selected Validation Data



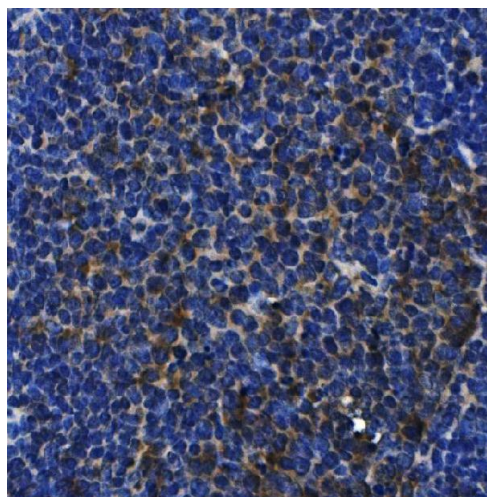
Western blot analysis of IL-10 using anti-IL-10 antibody (M00021-1).

Electrophoresis was performed on a 5-20% SDS-PAGE gel at 70V (Stacking gel) / 90V (Resolving gel) for 2-3 hours.

Lane 1: recombinant mouse IL-10 protein 15ng,

Lane 2: recombinant mouse IL-10 protein 10ng.

After Electrophoresis, proteins were transferred to a Nitrocellulose membrane at 150mA for 50-90 minutes. Blocked the membrane with 5% Non-fat Milk/ TBS for 1.5 hour at RT. The membrane was incubated with rat anti-IL-10 antigen affinity purified monoclonal antibody (Catalog # M00021-1) at 0.5 µg/mL overnight at 4~C, then washed with TBS-0.1%Tween 3 times with 5 minutes each and probed with a goat anti-rat IgG-HRP secondary antibody at a dilution of 1:10000 for 1.5 hour at RT. The signal is developed using an Enhanced Chemiluminescent detection (ECL) kit (Catalog # EK1001) with Tanon 5200 system.



IHC analysis of IL-10 using anti-IL-10 antibody (M00021-1).

IL-10 was detected in paraffin-embedded section of mouse spleen tissue. Heat mediated antigen retrieval was performed in EDTA buffer (pH8.0, epitope retrieval solution). The tissue section was blocked with 10% goat serum. The tissue section was then incubated with 5µg/ml rat anti-IL-10 Antibody (M00021-1) overnight at 4~C. Biotinylated goat anti-rat IgG was used as secondary antibody and incubated for 30 minutes at 37~C. The tissue section was developed using Streptavidin-Biotin-Complex (SABC) (Catalog # SA1021) with DAB as the chromogen.