

## Basic Information

<b>Product Name</b>	Anti-GSTP1 Antibody (Clone#OTI4B6)
<b>Gene Name</b>	GSTP1
<b>Source</b>	Mouse
<b>Clonality</b>	Monoclonal
<b>Isotype</b>	IgG2b
<b>Species Reactivity</b>	human, mouse, rat
<b>Tested Application</b>	IHC, WB
<b>Contents</b>	PBS (PH 7.3) containing 1% BSA, 50% glycerol and 0.02% sodium azide.
<b>Immunogen</b>	Full length human recombinant protein of human GSTP1 (NP_000843) produced in E.coli.
<b>Concentration</b>	500 ug/ml
<b>Purification</b>	Purified from mouse ascites fluids or tissue culture supernatant by affinity chromatography (protein A/G)
<b>Dilution Ratios</b>	Western blot (WB): 1:2000 Immunohistochemistry (IHC):1:150

## Storage

Stable for 12 months from date of receipt. Store at -20°C as received.

## Background Information

Glutathione S-transferases pi, also known as GST3, present in all tissues and cells, with the exception of red cells, in which only erythrocyte GST(GSTe) is observed. The GST-pi gene has 7 exons and 6 introns contained within approximately 2.8 kilobases. The GST-pi gene is mapped to chromosome 11. Placental glutathione-S-transferase-pi mRNA is abundantly expressed in human skin. GSTP does not contribute in vivo to the formation of glutathione conjugates of acetaminophen but plays a novel and unexpected role in the toxicity of this compound.

## Selected Validation Data

Product datasheet

**Anti-GSTP1 Antibody (Clone#OTI4B6)**

**Catalog Number: M00394-4**

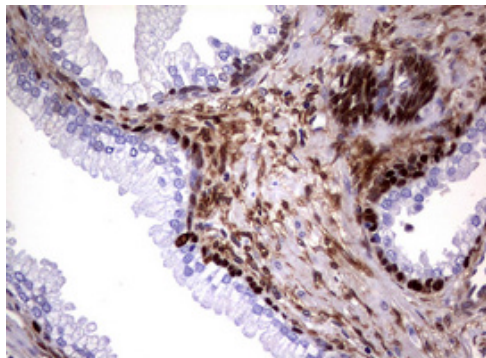


antibody and ELISA experts

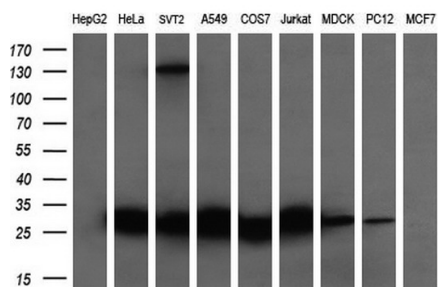
**BOSTER BIOLOGICAL TECHNOLOGY**

Building C21, 3rd to 5th Floors, Optics Valley Biopharmaceutical Accelerator,  
East Lake High-Tech Development Zone, Wuhan.

**Web:** www.boster.com **Phone:** 027-67845390/1/2 **Email:** boster@boster.com



Immunohistochemical staining of paraffin-embedded Human prostate tissue within the normal limits using anti-GSTP1 mouse monoclonal antibody. (Heat-induced epitope retrieval by 10mM citric buffer, pH6.0, 120°C for 3min, M00394-4)



Western blot analysis of extracts (35ug) from 9 different cell lines by using anti-GSTP1 monoclonal antibody (HepG2: human; HeLa: human; SVT2: mouse; A549: human; COS7: monkey; Jurkat: human; MDCK: canine; PC12: rat; MCF7: human) (1:200).