

Basic Information

Product Name	Anti-Integrin Beta 3/ITGB3 Antibody (Clone#29I49)		
Gene Name	ITGB3		
Source	Rabbit		
Clonality	Monoclonal		
Isotype	IgG		
Species Reactivity	human		
Tested Application	WB, IHC, IP		
Contents	500 ug/ml; Rabbit IgG in phosphate buffered saline, pH 7.4, 150mM NaCl, 0.02% sodium azide, 0.4-0.5 mg/ml BSA and 50% glycerol.		
Immunogen	A synthesized peptide derived from human Integrin beta 3 / CD61		
Concentration	500 ug/ml		
Purification	Affinity-chromatography		
Observed MW	100 kDa		
Dilution Ratios	Western blot (WB): 1:500-2000 Immunohistochemistry (IHC):1:50-200 ImmunoPrecipitation (IP): 1:50		

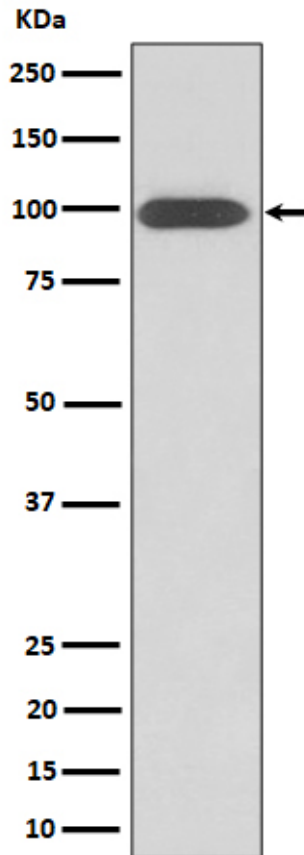
Storage

12 months from date of receipt, -20°C as supplied.

Selected Validation Data

**Anti-Integrin Beta 3/ITGB3 Antibody
(Clone#29I49)**

Catalog Number: M00587-2



Western blot analysis of Integrin beta 3 / CD61 expression in U-87 MG cell lysate.