

Basic Information

Product Name	Anti-Prolactin/PRL Antibody (Clone#OTI9D12)	
Gene Name	PRL	
Source	Mouse	
Clonality	Monoclonal	
Isotype	IgG2b	
Species Reactivity	human	
Tested Application	WB, ICC/IF, FCM	
Contents	PBS (pH 7.3) containing 1% BSA, 50% glycerol and 0.02% sodium azide.	
Immunogen	Full length human recombinant protein of human PRL (NP_000939) produced in HEK293T cell.	
Concentration	500 ug/ml	
Purification	Purified from mouse ascites fluids or tissue culture supernatant by affinity chromatography (protein A/G)	
Observed MW	26 kDa	
Dilution Ratios	Western blot (WB):	1:1000
	Immunocytochemistry/Immunofluorescence (ICC/IF):	1:50~100
	Flow cytometry (FCM):	1:100

Storage

Stable for 12 months from date of receipt. Store at -20°C as received.

Background Information

Prolactin (PRL), also known as luteotropic hormone or luteotropin, is a protein that in humans is best known for its role in enabling female mammals to produce milk. This gene encodes the anterior pituitary hormone prolactin. This secreted hormone is a growth regulator for many tissues, including cells of the immune system. It may also play a role in cell survival by suppressing apoptosis, and it is essential for lactation. Alternative splicing results in multiple transcript variants that encode the same protein.

Selected Validation Data

Product datasheet

**Anti-Prolactin/PRL Antibody
(Clone#OTI9D12)**

Catalog Number: M00601-3

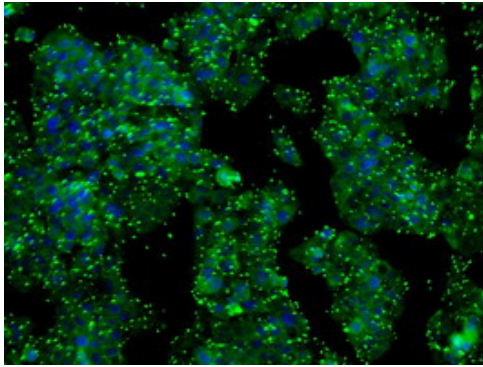
BOSTER[®]

antibody and ELISA experts

BOSTER BIOLOGICAL TECHNOLOGY

Building C21, 3rd to 5th Floors, Optics Valley Biopharmaceutical Accelerator,
East Lake High-Tech Development Zone, Wuhan.

Web: www.boster.com **Phone:** 027-67845390/1/2 **Email:** boster@boster.com



Immunofluorescent staining of HepG2 cells using anti-PRL mouse monoclonal antibody.