

Basic Information

Product Name	Anti-SSB Antibody (Clone#OTI1E11)	
Gene Name	SSB	
Source	Mouse	
Clonality	Monoclonal	
Isotype	IgG2a	
Species Reactivity	human, mouse, rat, dog, monkey	
Tested Application	WB, ICC/IF, FCM	
Contents	PBS (pH 7.3) containing 1% BSA, 50% glycerol and 0.02% sodium azide.	
Immunogen	Full-length protein expressed in 293T cell transfected with human SSB expression vector	
Concentration	Lot dependent	
Purification	Purified from mouse ascites fluids or tissue culture supernatant by affinity chromatography (protein A/G)	
Observed MW	47 kDa	
Dilution Ratios	Western blot (WB):	1:1000~2000
	Immunocytochemistry/Immunofluorescence (ICC/IF):	1:50~100
	Flow cytometry (FCM):	1:100

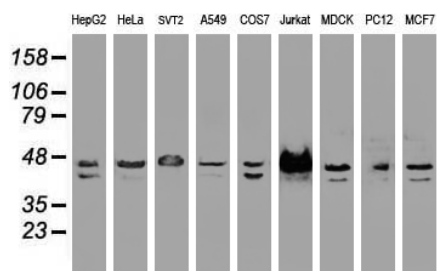
Storage

Stable for 12 months from date of receipt. Store at -20°C as received.

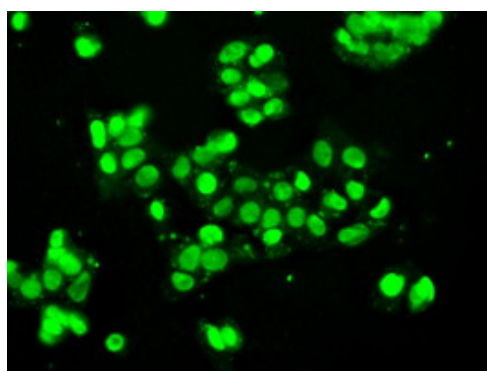
Background Information

La is involved in diverse aspects of RNA metabolism, including binding and protecting 3-prime UUU(H) elements of newly RNA polymerase III (see MIM 606007)-transcribed RNA, processing 5-prime and 3-prime ends of pre-tRNA precursors, acting as an RNA chaperone, and binding viral RNAs associated with hepatitis C virus. La protein was originally defined by its reactivity with autoantibodies from patients with Sjogren syndrome (MIM 270150) and systemic lupus erythematosus

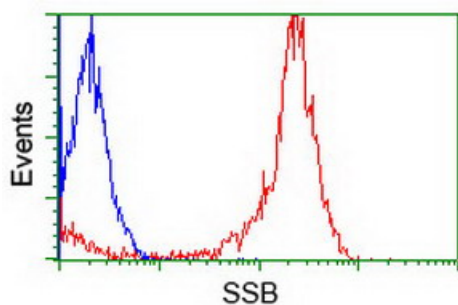
Selected Validation Data



Western blot analysis of extracts (35ug) from 9 different cell lines by using anti-SSB monoclonal antibody.



Immunofluorescent staining of HepG2 cells using anti-SSB mouse monoclonal antibody.



Flow cytometric Analysis of Jurkat cells, using anti-SSB antibody, (Red), compared to a nonspecific negative control antibody, (Blue).