

Basic Information

Product Name	Anti-TGFR2 Antibody (Clone#OTI3B4)
Gene Name	TGFR2
Source	Mouse
Clonality	Monoclonal
Isotype	IgG2a
Species Reactivity	human, mouse, rat
Tested Application	IHC, WB
Contents	PBS (PH 7.3) containing 1% BSA, 50% glycerol and 0.02% sodium azide.
Immunogen	Human recombinant protein fragment corresponding to amino acids 23-294 of human TGFR2(NP_003233) produced in E.coli.
Concentration	500 ug/ml
Purification	Purified from mouse ascites fluids or tissue culture supernatant by affinity chromatography (protein A/G)
Observed MW	62 kDa
Dilution Ratios	Western blot (WB): 1:2000 Immunohistochemistry (IHC):1:2000

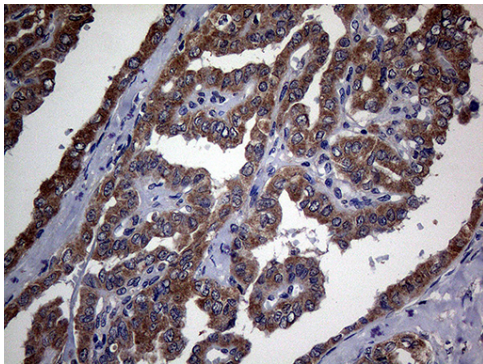
Storage

Stable for 12 months from date of receipt. Store at -20°C as received.

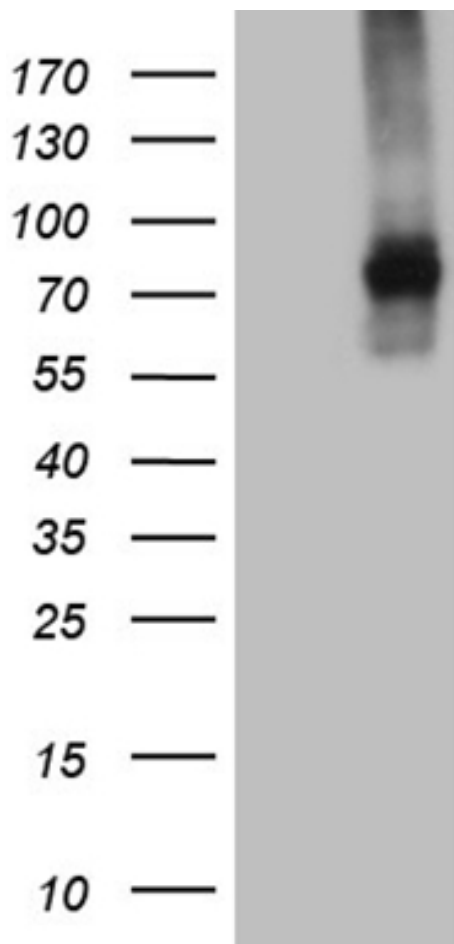
Background Information

This gene encodes a member of the Ser/Thr protein kinase family and the TGFB receptor subfamily. The encoded protein is a transmembrane protein that has a protein kinase domain, forms a heterodimeric complex with another receptor protein, and binds TGF-beta. This receptor/ligand complex phosphorylates proteins, which then enter the nucleus and regulate the transcription of a subset of genes related to cell proliferation. Mutations in this gene have been associated with Marfan Syndrome, Loeys-Deitz Aortic Aneurysm Syndrome, and the development of various types of tumors. Alternatively spliced transcript variants encoding different isoforms have been characterized. [provided by RefSeq, Jul 2008]

Selected Validation Data



Immunohistochemical staining of paraffin-embedded Carcinoma of Human thyroid tissue using anti-TGFBR2 mouse monoclonal antibody. (Heat-induced epitope retrieval by 1mM EDTA in 10mM Tris buffer (pH8.5) at 120°C for 3min, M00759-3) (1:2000)



HEK293T cells were transfected with the pCMV6-ENTRY control (Left lane) or pCMV6-ENTRY TGFBR2 (Right lane) cDNA for 48 hrs and lysed. Equivalent amounts of cell lysates (5 ug per lane) were separated by SDS-PAGE and immunoblotted with anti-TGFBR2 (Cat# M00759-3)(1:2000).