

Basic Information

Product Name	Anti-ALDH3A1 Antibody (Clone#OTI1B6)		
Gene Name	ALDH3A1		
Source	Mouse		
Clonality	Monoclonal		
Isotype	IgG2a		
Species Reactivity	human		
Tested Application	WB, IHC, ICC/IF, FCM		
Contents	PBS (pH 7.3) containing 1% BSA, 50% glycerol and 0.02% sodium azide.		
Immunogen	Full length human recombinant protein of human ALDH3A1(NP_000682) produced in HEK293T cell.		
Concentration	Lot dependent		
Purification	Purified from mouse ascites fluids or tissue culture supernatant by affinity chromatography (protein A/G)		
Observed MW	50.2 kDa		
Dilution Ratios	Western blot (WB):	1:2000	
	Immunohistochemistry (IHC):	1:50	
	Immunocytochemistry/Immunofluorescence (ICC/IF):	1:100	
	Flow cytometry (FCM):	1:100	

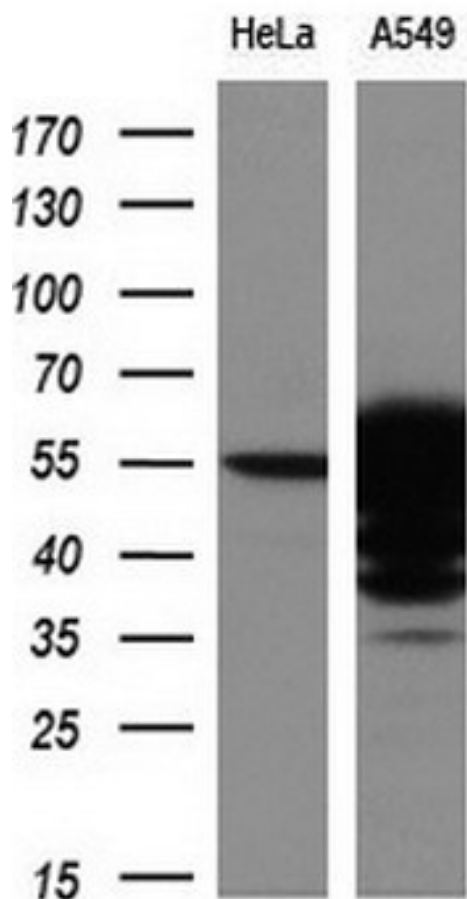
Storage

Stable for 12 months from date of receipt. Store at -20°C as received.

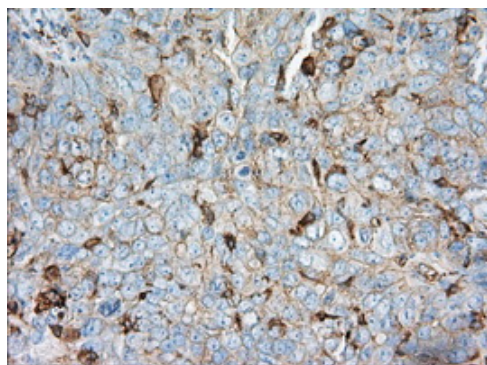
Background Information

Aldehyde dehydrogenases oxidize various aldehydes to the corresponding acids. They are involved in the detoxification of alcohol-derived acetaldehyde and in the metabolism of corticosteroids, biogenic amines, neurotransmitters, and lipid peroxidation. The enzyme encoded by this gene forms a cytoplasmic homodimer that preferentially oxidizes aromatic and medium-chain (6 carbons or more) saturated and unsaturated aldehyde substrates. It is thought to promote resistance to UV and 4-hydroxy-2-nonenal-induced oxidative damage in the cornea. The gene is located within the Smith-Magenis syndrome region on chromosome 17. Multiple alternatively spliced variants, encoding the same protein, have been identified.

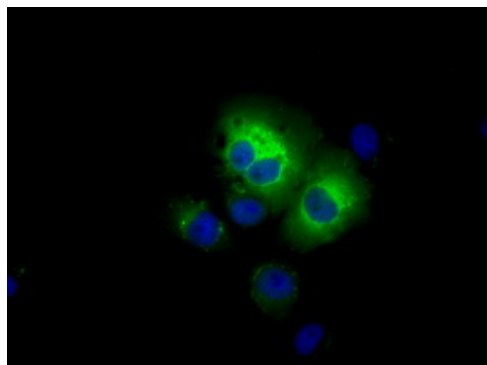
Selected Validation Data



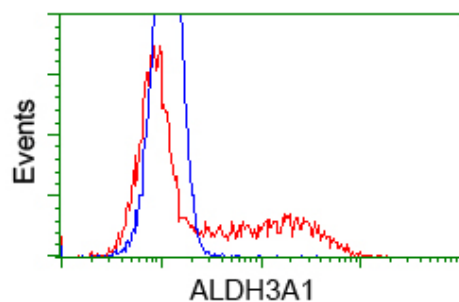
Western blot analysis of extracts (10ug) from 2 different cell lines by using anti-ALDH3A1 monoclonal antibody at 1:200 dilution.



Immunohistochemical staining of paraffin-embedded Adenocarcinoma of ovary tissue using anti-ALDH3A1 mouse monoclonal antibody. (Heat-induced epitope retrieval by 10mM citric buffer, pH6.0, 100°C for 10min, M01121, Dilution 1:50)



Anti-ALDH3A1 mouse monoclonal antibody immunofluorescent staining of COS7 cells transiently transfected by pCMV6-ENTRY ALDH3A1 .



HEK293T cells transfected with either pCMV6-ENTRY ALDH3A1 (Red) or empty vector control plasmid (Blue) were immunostained with anti-ALDH3A1 mouse monoclonal (M01121), and then analyzed by flow cytometry.