

Basic Information

| | |
|---------------------------|---|
| Product Name | Anti-Beta Actin/ACTB Antibody (Clone#17A10) |
| Gene Name | ACTB |
| Source | Mouse |
| Clonality | Monoclonal |
| Isotype | IgG1 |
| Species Reactivity | human, mouse, rat, chicken, rabbit |
| Tested Application | WB, IHC, ICC/IF |
| Contents | 500 ug/ml; Rabbit IgG in phosphate buffered saline, pH 7.4, 150mM NaCl, 0.02% sodium azide, 0.4-0.5 mg/ml BSA and 50% glycerol. |
| Immunogen | A synthesized peptide derived from human beta Actin |
| Concentration | 500 ug/ml |
| Purification | Affinity-chromatography |
| Observed MW | 42 kDa |
| Dilution Ratios | Western blot (WB):1:3000-10000 IHC : 1:100-1:200 ICC/IF: 1:100-200 |

Storage

12 months from date of receipt, -20°C as supplied. 6 months 2 to 8°C after reconstitution. Avoid repeated freezing and thawing.

Background Information

The primary site of action of cytochalasin B on cell motility processes is beta-actin. Habets et al.(1992) generated hybrids that harbor only specific regions of human chromosome 7 and assigned the ACTB locus to 7p15-p12. ACTB and the other assigned beta-actin-related sequences are dispersed over at least four different chromosomes including one locus assigned to the X chromosome. A mutation of beta-actin that alters depolymerization dynamics is associated with autosomal dominant developmental malformations, deafness, and dystonia.

Reference

Anti-Beta Actin/ACTB Antibody (Clone#17A10)被引用在52文献中。

Selected Validation Data

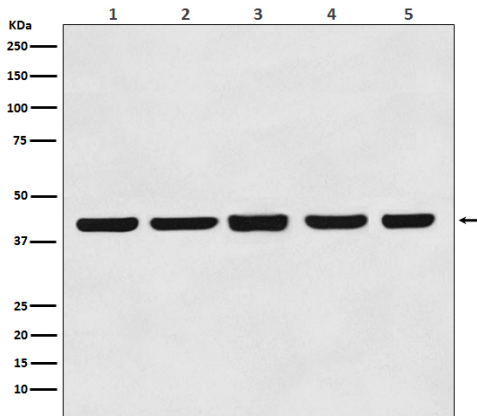


Figure 1. Western blot analysis of beta Actin expression in (1) HeLa cell lysate; (2) Rat brain lysate; (3) Mouse brain lysate; (4) Chicken lung lysate; (5) Rabbit testis lysate with beta Actin mouse mAb.

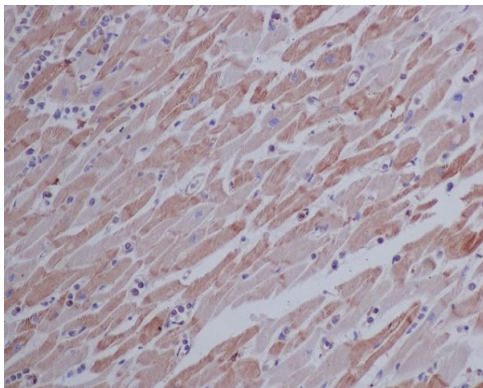


Figure 2. Immunohistochemical analysis of paraffin-embedded human heart, using beta Actin Mouse Monoclonal Antibody.

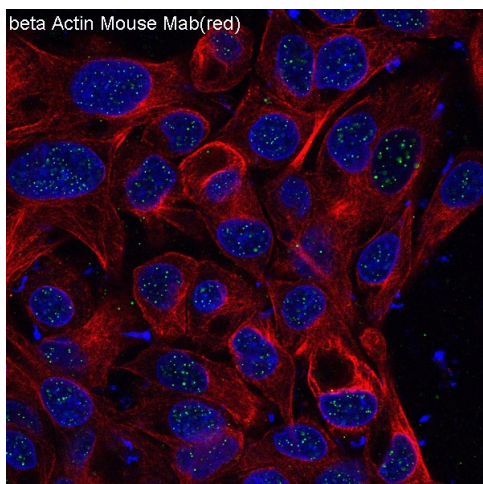


Figure 3. Immunofluorescent analysis of HepG2 cells, using beta Actin mAb.