

## Basic Information

Product Name	Anti-KGA/GAC/GLS Antibody (Clone#3G13)	
Gene Name	GLS	
Source	Mouse	
Clonality	Monoclonal	
Isotype	IgG2a	
Species Reactivity	human, mouse, rat	
Tested Application	WB, IHC, ICC/IF, FCM	
Contents	500 ug/ml antibody with PBS, 0.02% NaN <sub>3</sub> , 1 mg/ml BSA and 50% glycerol.	
Immunogen	E.coli-derived human Glutaminase/GLS recombinant protein (Position: K396-N654).	
Concentration	500 ug/ml	
Purification	protein G purified.	
Observed MW	65-73 kDa	
Dilution Ratios	Western blot (WB): 1:500-2000 Immunohistochemistry (IHC): 1:50-400 Immunocytochemistry/Immunofluorescence (ICC/IF): 1:50-400 Flow Cytometry (Fixed): 1:50-200 (Boiling the paraffin sections in 10mM citrate buffer, pH6.0, or PH8.0 EDTA repair liquid for 20 mins is required for the staining of formalin/paraffin sections.) Optimal working dilutions must be determined by end user.	

## Storage

12 months from date of receipt, -20°C as supplied.

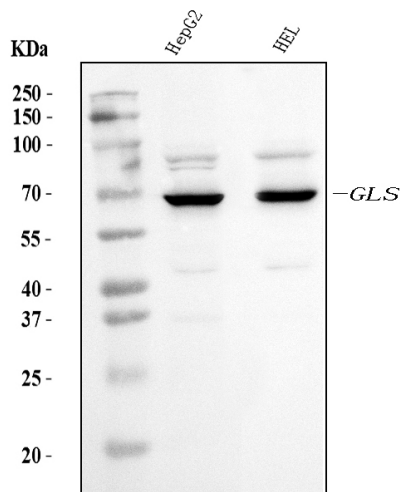
## Background Information

This gene encodes the K-type mitochondrial glutaminase. The encoded protein is an phosphate-activated amidohydrolase that catalyzes the hydrolysis of glutamine to glutamate and ammonia. This protein is primarily expressed in the brain and kidney plays an essential role in generating energy for metabolism, synthesizing the brain neurotransmitter glutamate and maintaining acid-base balance in the kidney. Alternate splicing results in multiple transcript variants.

## Reference

Anti-KGA/GAC/GLS Antibody (Clone#3G13)被引用在1文献中。

## Selected Validation Data

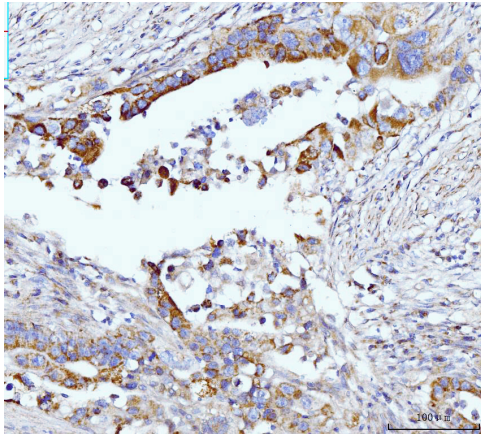


Western blot analysis of KGA/GAC/GLS using anti-KGA/GAC/GLS antibody (M01272-3). The sample well of each lane was loaded with 30 ug of sample under reducing conditions.

Lane 1: HepG2 whole cell lysates,

Lane 2: HEL whole cell lysates.

After electrophoresis, proteins were transferred to a membrane. Then the membrane was incubated with mouse anti-KGA/GAC/GLS antigen affinity purified monoclonal antibody (M01272-3) at a dilution of 1:1000 and probed with a goat anti-mouse IgG-HRP secondary antibody (Catalog # BA1050). The signal is developed using ECL Plus Western Blotting Substrate (Catalog # AR1197). A specific band was detected for KGA/GAC/GLS at approximately 65-73 kDa. The expected band size for KGA/GAC/GLS is at 73 kDa.



IHC analysis of KGA/GAC/GLS using anti-KGA/GAC/GLS antibody (M01272-3).

KGA/GAC/GLS was detected in a paraffin-embedded section of human appendiceal adenocarcinoma tissue. Biotinylated goat anti-mouse IgG was used as secondary antibody. The tissue section was incubated with mouse anti-KGA/GAC/GLS Antibody (M01272-3) at a dilution of 1:200 and developed using Streptavidin-Biotin-Complex (SABC) (Catalog # SA1021) with DAB (Catalog # AR1027) as the chromogen.

Product datasheet  
**Anti-KGA/GAC/GLS Antibody**  
**(Clone#3G13)**

**Catalog Number: M01272-3**

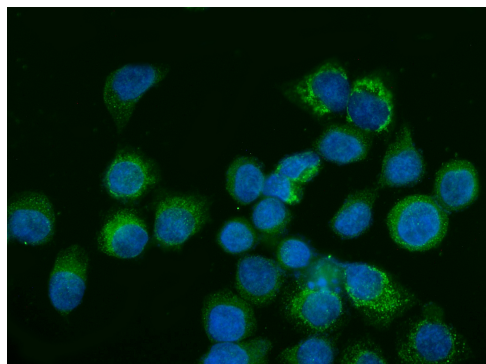


antibody and ELISA experts

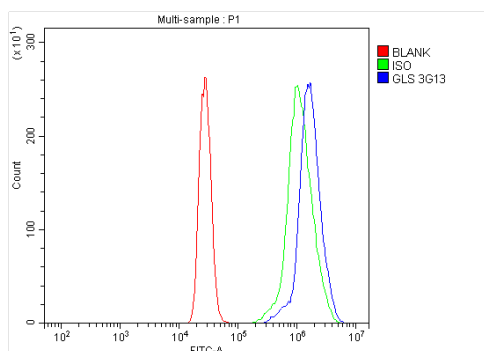
**BOSTER BIOLOGICAL TECHNOLOGY**

Building C21, 3rd to 5th Floors, Optics Valley Biopharmaceutical Accelerator,  
East Lake High-Tech Development Zone, Wuhan.

**Web:** www.boster.com **Phone:** 027-67845390/1/2 **Email:** boster@boster.com



IF analysis of KGA/GAC/GLS using anti-KGA/GAC/GLS antibody (M01272-3). KGA/GAC/GLS was detected in an immunocytochemical section of SiHa cells. The section was incubated with mouse anti-KGA/GAC/GLS Antibody (M01272-3) at a dilution of 1:100. Dylight488-conjugated Anti-mouse IgG Secondary Antibody (green)(Catalog#BA1126) was used as secondary antibody. The section was counterstained with DAPI (Catalog # AR1176) (Blue).



Flow Cytometry analysis of U937 cells using anti-KGA/GAC/GLS antibody (M01272-3).

Overlay histogram showing U937 cells stained with M01272-3 (Blue line). To facilitate intracellular staining, cells were fixed with 4% paraformaldehyde and permeabilized with permeabilization buffer. The cells were blocked with 10% normal goat serum. And then incubated with mouse anti-KGA/GAC/GLS Antibody (M01272-3) at 1:100 dilution for 30 min at 20°C. DyLight®488 conjugated goat anti-mouse IgG (BA1126) was used as secondary antibody at 1:100 dilution for 30 minutes at 20°C. Isotype control antibody (Green line) was mouse IgG at 1:100 dilution used under the same conditions. Unlabelled sample without incubation with primary antibody and secondary antibody (Red line) was used as a blank control.