

Basic Information

Product Name	Anti-PADI4 Antibody (Clone#OTI3E1)		
Gene Name	PADI4		
Source	Mouse		
Clonality	Monoclonal		
Isotype	IgG1		
Species Reactivity	human		
Tested Application	IHC, ICC/IF, WB		
Contents	PBS (PH 7.3) containing 1% BSA, 50% glycerol and 0.02% sodium azide.		
Immunogen	Human recombinant protein fragment corresponding to amino acids 299-588 of human PADI4(NP_036519) produced in E.coli.		
Concentration	500 ug/ml		
Purification	Purified from mouse ascites fluids or tissue culture supernatant by affinity chromatography (protein A/G)		
Observed MW	73.9 kDa		
Dilution Ratios	Western blot (WB): 1:2000 Immunohistochemistry (IHC): 1:150 Immunocytochemistry/Immunofluorescence (ICC/IF):1:100		

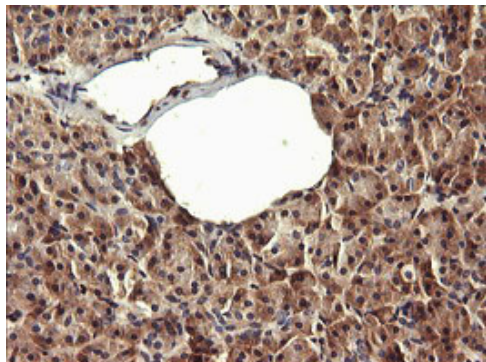
Storage

Stable for 12 months from date of receipt. Store at -20°C as received.

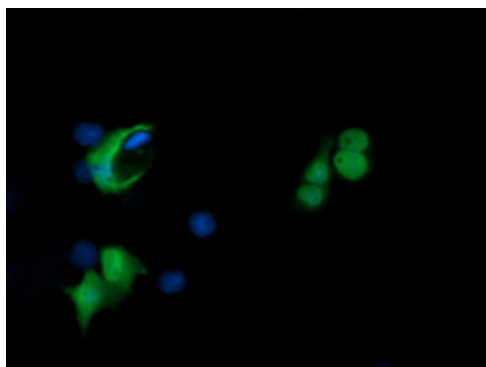
Background Information

This gene is a member of a gene family which encodes enzymes responsible for the conversion of arginine residues to citrulline residues. This gene may play a role in granulocyte and macrophage development leading to inflammation and immune response. [provided by RefSeq, Jul 2008]

Selected Validation Data

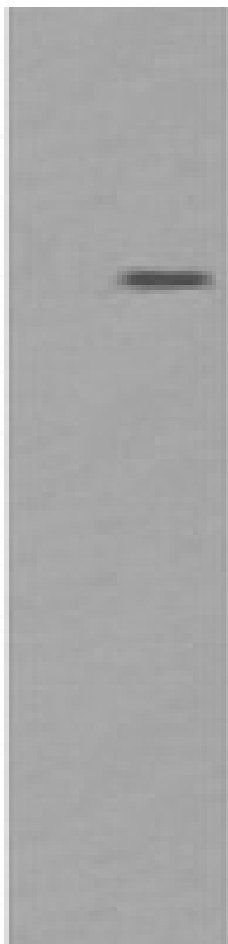


Immunohistochemical staining of paraffin-embedded Human pancreas tissue within the normal limits using anti-PADI4 mouse monoclonal antibody. (Heat-induced epitope retrieval by 10mM citric buffer, pH6.0, 120°C for 3min, M01353-1)



Anti-PADI4 mouse monoclonal antibody immunofluorescent staining of COS7 cells transiently transfected by pCMV6-ENTRY PADI4 .

170 —
130 —
100 —
70 —
55 —
40 —
35 —
25 —
15 —
10 —



HEK293T cells were transfected with the pCMV6-ENTRY control (Left lane) or pCMV6-ENTRY PADI4 (Right lane) cDNA for 48 hrs and lysed. Equivalent amounts of cell lysates (5 ug per lane) were separated by SDS-PAGE and immunoblotted with anti-PADI4.