

## Basic Information

<b>Product Name</b>	Anti-N-Cadherin/CDH2 Antibody (Clone#OTI3B10)	
<b>Gene Name</b>	CDH2	
<b>Source</b>	Mouse	
<b>Clonality</b>	Monoclonal	
<b>Isotype</b>	IgG2a	
<b>Species Reactivity</b>	human, mouse, rat	
<b>Tested Application</b>	WB, IHC, FCM	
<b>Contents</b>	PBS (PH 7.3) containing 1% BSA, 50% glycerol and 0.02% sodium azide.	
<b>Immunogen</b>	Full length human recombinant protein of human CDH2(NP_001783) produced in HEK293T cell.	
<b>Concentration</b>	500 ug/ml	
<b>Purification</b>	Purified from mouse ascites fluids or tissue culture supernatant by affinity chromatography (protein A/G)	
<b>Observed MW</b>	140 kDa	
<b>Dilution Ratios</b>	Western blot (WB):	1:2000
	Immunohistochemistry (IHC):	1:150
	Flow cytometry (FCM):	1:100

## Storage

Stable for 12 months from date of receipt. Store at -20°C as received.

## Background Information

This gene is a classical cadherin from the cadherin superfamily. The encoded protein is a calcium dependent cell-cell adhesion glycoprotein comprised of five extracellular cadherin repeats, a transmembrane region and a highly conserved cytoplasmic tail. The protein functions during gastrulation and is required for establishment of left-right asymmetry. At certain central nervous system synapses, presynaptic to postsynaptic adhesion is mediated at least in part by this gene product. [provided by RefSeq]

## Reference

Anti-N-Cadherin/CDH2 Antibody (Clone#OTI3B10)被引用在4文献中。

## Selected Validation Data

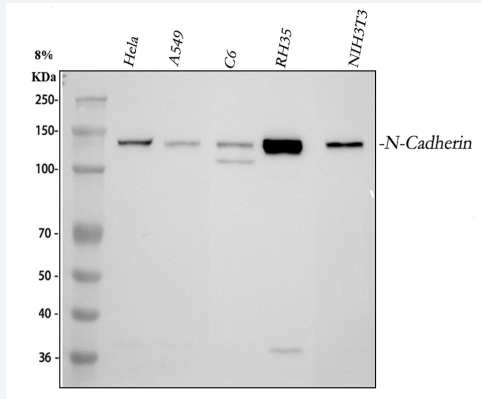


Figure 1. Western blot analysis of anti-N-Cadherin/CDH2 antibody (M01577-5). The sample well of each lane was loaded with 30 ug of sample under reducing conditions.

Lane 1: human HeLa whole cell lysates,  
Lane 2: human A549 whole cell lysates,  
Lane 3: rat C6 whole cell lysates,  
Lane 4: rat RH-35 whole cell lysates,  
Lane 5: mouse NIH/3T3 whole cell lysates.

After electrophoresis, proteins were transferred to a membrane. Then the membrane was incubated with rabbit anti-N-Cadherin/CDH2 antigen affinity purified monoclonal antibody (M01577-5) at a dilution of 1:1000 and probed with a goat anti-rabbit IgG-HRP secondary antibody (Catalog # BA1054). The signal is developed using ECL Plus Western Blotting Substrate (Catalog # AR1197). A specific band was detected for N-Cadherin/CDH2 at approximately 140 kDa. The expected band size for N-Cadherin/CDH2 is at 100 kDa.

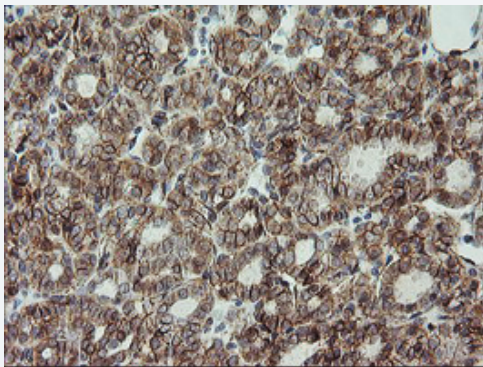


Figure 2. Immunohistochemical staining of paraffin-embedded Carcinoma of Human thyroid tissue using anti-CDH2 mouse monoclonal antibody. (Heat-induced epitope retrieval by 10mM citric buffer, pH6.0, 100°C for 10min, M01577-5)

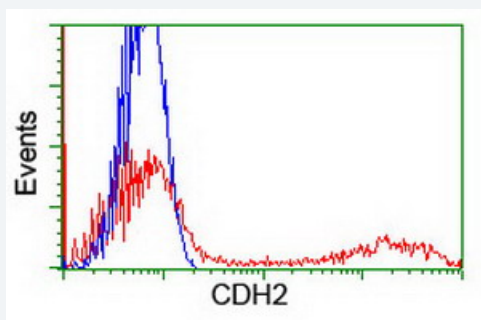


Figure 4. HEK293T cells transfected with either overexpress plasmid (Red) or empty vector control plasmid (Blue) were immunostained by anti-CDH2 antibody, and then analyzed by flow cytometry.