

Basic Information

Product Name	Anti-TH Antibody (Clone#OTI1A12)		
Gene Name	TH		
Source	Mouse		
Clonality	Monoclonal		
Isotype	IgG1		
Species Reactivity	human, mouse, rat		
Tested Application	WB, IHC, ICC/IF		
Contents	PBS (PH 7.3) containing 1% BSA, 50% glycerol and 0.02% sodium azide.		
Immunogen	Full length human recombinant protein of human TH(NP_000351) produced in HEK293T cell.		
Concentration	500 ug/ml		
Purification	Purified from mouse ascites fluids or tissue culture supernatant by affinity chromatography (protein A/G)		
Observed MW	59 kDa		
Dilution Ratios	Western blot (WB):	1:4000	
	Immunohistochemistry (IHC):	1:150	
	Immunocytochemistry/Immunofluorescence (ICC/IF):	1:100	

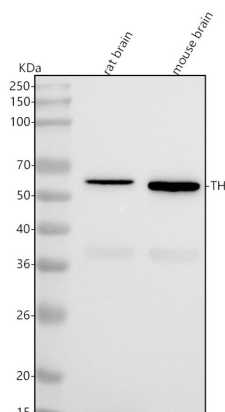
Storage

Stable for 12 months from date of receipt. Store at -20°C as received.

Background Information

The protein encoded by this gene is involved in the conversion of tyrosine to dopamine. It is the rate-limiting enzyme in the synthesis of catecholamines, hence plays a key role in the physiology of adrenergic neurons. Mutations in this gene have been associated with autosomal recessive Segawa syndrome. Alternatively spliced transcript variants encoding different isoforms have been noted for this gene. [provided by RefSeq, Jul 2008]

Selected Validation Data

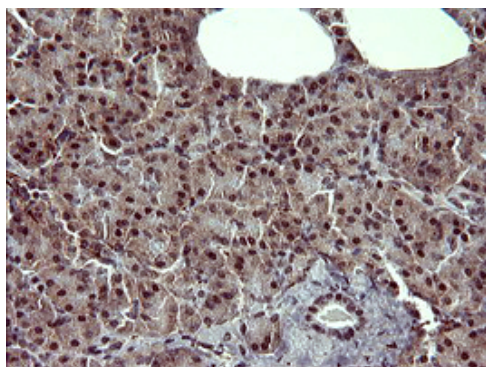


Western blot analysis of anti-TH antibody (M01917-2). The sample well of each lane was loaded with 30 ug of sample under reducing conditions.

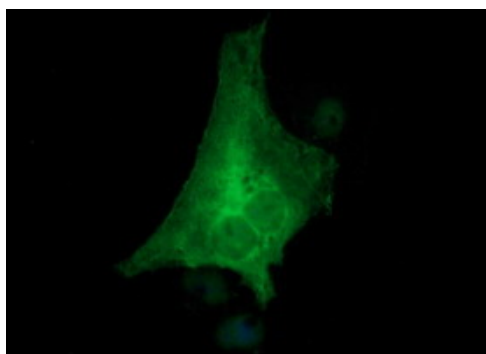
Lane 1: rat brain tissue lysates,

Lane 2: mouse brain tissue lysates.

After electrophoresis, proteins were transferred to a membrane. Then the membrane was incubated with rabbit anti-TH antigen affinity purified monoclonal antibody (M01917-2) at a dilution of 1:1000 and probed with a goat anti-rabbit IgG-HRP secondary antibody (Catalog # BA1054). The signal is developed using ECL Plus Western Blotting Substrate (Catalog # AR1197). A specific band was detected for TH at approximately 59 kDa. The expected band size for TH is at 59 kDa.



Immunohistochemical staining of paraffin-embedded Human pancreas tissue within the normal limits using anti-TH mouse monoclonal antibody. (M01917-2)



Anti-TH mouse monoclonal antibody immunofluorescent staining of COS7 cells transiently transfected by pCMV6-ENTRY TH .