

Basic Information

Product Name	Anti-Cytokeratin 19/KRT19 Antibody (Clone#OTI3F8)		
Gene Name	KRT19		
Source	Mouse		
Clonality	Monoclonal		
Isotype	IgG1		
Species Reactivity	human, rat, dog, monkey		
Tested Application	WB, IHC, ICC/IF		
Contents	PBS (pH 7.3) containing 1% BSA, 50% glycerol and 0.02% sodium azide.		
Immunogen	Recombinant fragment expressed in E.coli corresponding to amino acids 240-390 of human CK19		
Concentration	0.15 mg/ml		
Purification	Purified from mouse ascites fluids or tissue culture supernatant by affinity chromatography (protein A/G)		
Observed MW	44 kDa		
Dilution Ratios	Western blot (WB): 1:1000 Immunohistochemistry (IHC): 1:50~150 Immunocytochemistry/Immunofluorescence (ICC/IF):1:100		

Storage

Stable for 12 months from date of receipt. Store at -20°C as received.

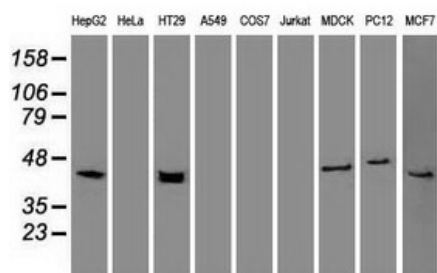
Background Information

Keratin, type I cytoskeletal 19 is a protein that in humans is encoded by the KRT19 gene. The protein encoded by this gene is a member of the keratin family. It is specifically expressed in the periderm, the transiently superficial layer that envelops the developing epidermis. The type I cytokeratins are clustered in a region of chromosome 17q12-q21. Due to its high sensitivity, KRT19 is the most used marker for the RT-PCR-mediated detection of tumor cells disseminated in lymph nodes, peripheral blood, and bone marrow of breast cancer patients. Keratin 19 is often used together with keratin 8 and keratin 18 to differentiate cells of epithelial origin from hematopoietic cells in tests that enumerate circulating tumor cells in blood.

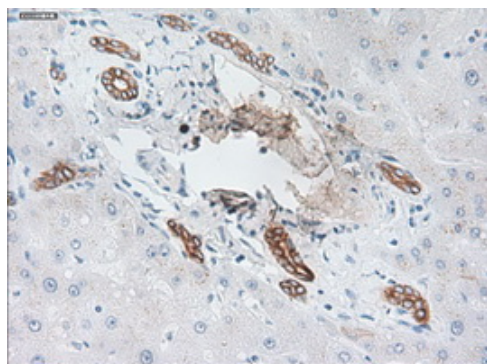
Selected Validation Data

Anti-Cytokeratin 19/KRT19 Antibody (Clone#OTI3F8)

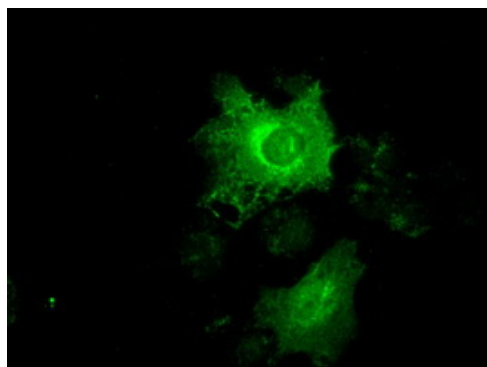
Catalog Number: **M02101-6**



Western blot analysis of extracts (35ug) from 9 different cell lines by using anti-KRT19 monoclonal antibody.



Immunohistochemical staining of paraffin-embedded liver tissue within the normal limits using anti-KRT19 mouse monoclonal antibody. (Heat-induced epitope retrieval by 10mM citric buffer, pH6.0, 100°C for 10min, M02101-6, Dilution 1:50)



Anti-KRT19 mouse monoclonal antibody immunofluorescent staining of COS7 cells transiently transfected by pCMV6-ENTRY KRT19 .