

## Basic Information

Product Name	Anti-Cytokeratin 19/KRT19 Antibody (Clone#28K37)	
Gene Name	KRT19	
Source	Rabbit	
Clonality	Monoclonal	
Isotype	IgG	
Species Reactivity	human, rat	
Tested Application	WB, IHC, ICC/IF, IP, FCM	
Contents	500 ug/ml; Rabbit IgG in phosphate buffered saline, pH 7.4, 150mM NaCl, 0.02% sodium azide, 0.4-0.5 mg/ml BSA and 50% glycerol.	
Immunogen	A synthesized peptide derived from human Cytokeratin 19	
Concentration	500 ug/ml	
Purification	Affinity-chromatography	
Observed MW	44 kDa	
Dilution Ratios	Western blot (WB): 1:500-2000 Immunohistochemistry (IHC): 1:50-200 Immunocytochemistry/Immunofluorescence (ICC/IF): 1:50-200 ImmunoPrecipitation (IP): 1:50 Flow Cytometry (FCM): 1:50	

## Storage

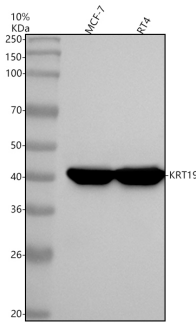
12 months from date of receipt, -20°C as supplied.

## Reference

Anti-Cytokeratin 19/KRT19 Antibody (Clone#28K37)被引用在5文献中。

## Selected Validation Data

# Anti-Cytokeratin 19/KRT19 Antibody (Clone#28K37)

**Catalog Number: M02101-7**

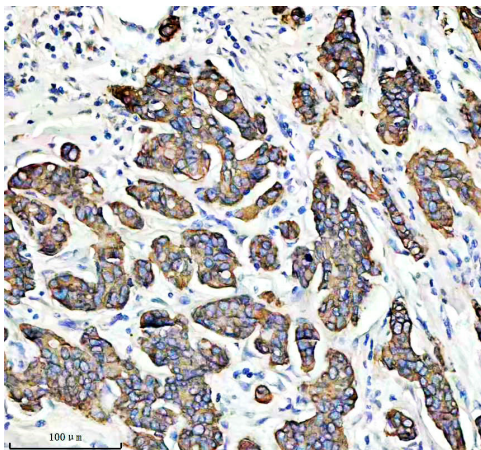
Western blot analysis of anti-Cytokeratin 19/KRT19 antibody (M02101-7).

The sample well of each lane was loaded with 30 ug of sample under reducing conditions.

Lane 1: human MCF-7 whole cell lysates,

Lane 2: human RT4 whole cell lysates.

After electrophoresis, proteins were transferred to a membrane. Then the membrane was incubated with rabbit anti-Cytokeratin 19/KRT19 antigen affinity purified monoclonal antibody (M02101-7) at a dilution of 1:1000 and probed with a goat anti-rabbit IgG-HRP secondary antibody (Catalog # BA1054). The signal is developed using ECL Plus Western Blotting Substrate (Catalog # AR1197). A specific band was detected for Cytokeratin 19/KRT19 at approximately 40 kDa. The expected band size for Cytokeratin 19/KRT19 is at 44 kDa.



IHC analysis of Cytokeratin 19/KRT19 using anti-Cytokeratin 19/KRT19 antibody (M02101-7) .

Cytokeratin 19/KRT19 was detected in a paraffin-embedded section of human breast cancer tissue. The tissue section was incubated with rabbit anti-Cytokeratin 19/KRT19 Antibody (M02101-7) at a dilution of 1:200 and developed using HRP Conjugated Rabbit IgG Super Vision Assay Kit (Catalog # SV0002) with DAB (Catalog # AR1027) as the chromogen.