

Basic Information

Product Name	Anti-CPT1B Antibody (Clone#OTI2A6)
Gene Name	CPT1B
Source	Mouse
Clonality	Monoclonal
Isotype	IgG2b
Species Reactivity	human, mouse, rat
Tested Application	WB, IHC
Contents	PBS (PH 7.3) containing 1% BSA, 50% glycerol and 0.02% sodium azide.
Immunogen	Human recombinant protein fragment corresponding to amino acids 187-440 of human CPT1B (NP_004368) produced in E.coli.
Concentration	500 ug/ml
Purification	Purified from mouse ascites fluids or tissue culture supernatant by affinity chromatography (protein A/G)
Observed MW	88 kDa
Dilution Ratios	Western blot (WB): 1:2000 Immunohistochemistry (IHC):1:500

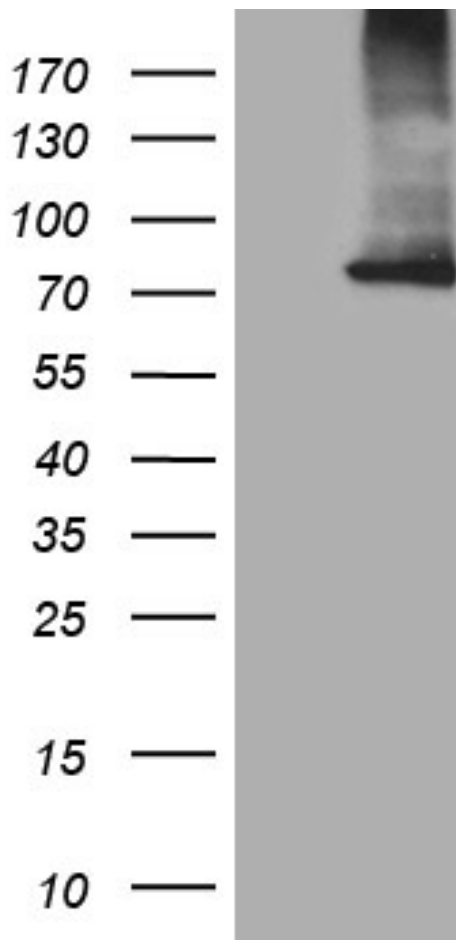
Storage

Stable for 12 months from date of receipt. Store at -20°C as received.

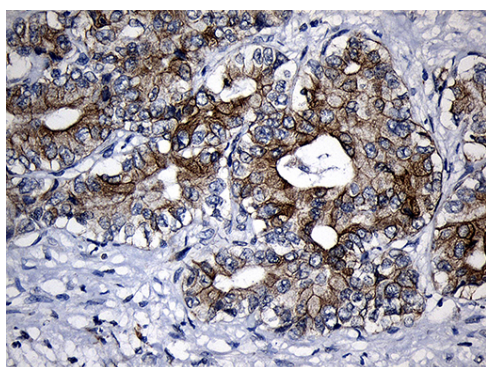
Background Information

CPT1B is located on 22q13.33. The protein encoded by this gene, a member of the carnitine/ choline acetyltransferase family, is the rate-controlling enzyme of the long-chain fatty acid beta-oxidation pathway in muscle mitochondria. This enzyme is required for the net transport of long-chain fatty acyl-CoAs from the cytoplasm into the mitochondria. Multiple transcript variants encoding different isoforms have been found for this gene, and read-through transcripts are expressed from the upstream locus that include exons from this gene.

Selected Validation Data



HEK293T cells were transfected with the pCMV6-ENTRY control (Left lane) or pCMV6-ENTRY CPT1B (Right lane) cDNA for 48 hrs and lysed. Equivalent amounts of cell lysates (5 ug per lane) were separated by SDS-PAGE and immunoblotted with anti-CPT1B (Cat# M03558)(1:2000).



Immunohistochemical staining of paraffin-embedded Carcinoma of Human liver tissue using anti-CPT1B mouse monoclonal antibody. (Heat-induced epitope retrieval by 1mM EDTA in 10mM Tris buffer (pH8.5) at 120°C for 3min, M03558) (1:500)