

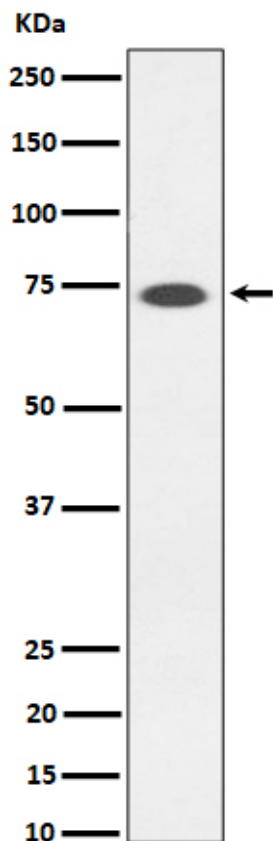
## Basic Information

<b>Product Name</b>	Anti-SSTR3 Antibody (Clone#29S11)
<b>Gene Name</b>	SSTR3
<b>Source</b>	Rabbit
<b>Clonality</b>	Monoclonal
<b>Isotype</b>	IgG
<b>Species Reactivity</b>	human
<b>Tested Application</b>	WB, FCM
<b>Contents</b>	500 ug/ml; Rabbit IgG in phosphate buffered saline, pH 7.4, 150mM NaCl, 0.02% sodium azide, 0.4-0.5 mg/ml BSA and 50% glycerol.
<b>Immunogen</b>	A synthesized peptide derived from human SSTR3
<b>Concentration</b>	500 ug/ml
<b>Purification</b>	Affinity-chromatography
<b>Observed MW</b>	40,70 kDa
<b>Dilution Ratios</b>	Western blot (WB): 1:500-2000 Flow Cytometry (FCM):1:50

## Storage

12 months from date of receipt, -20°C as supplied. 6 months 2 to 8°C after reconstitution. Avoid repeated freezing and thawing.

## Selected Validation Data



Western blot analysis of SSTR3 expression in Somatostatin Receptor 3 SSTR3 transfected 293T cell lysate.