

Basic Information

Product Name	Anti-TP53INP1 Antibody (Clone#19T28)	
Gene Name	TP53INP1	
Source	Rabbit	
Clonality	Monoclonal	
Isotype	IgG	
Species Reactivity	human, mouse, rat	
Tested Application	WB, IHC, ICC/IF	
Contents	500 ug/ml; Rabbit IgG in phosphate buffered saline, pH 7.4, 150mM NaCl, 0.02% sodium azide, 0.4-0.5 mg/ml BSA and 50% glycerol.	
Immunogen	A synthesized peptide derived from human p53 DINP1	
Concentration	500 ug/ml	
Purification	Affinity-chromatography	
Observed MW	32 kDa	
Dilution Ratios	Western blot (WB): 1:500-2000 Immunohistochemistry (IHC): 1:50-200 Immunocytochemistry/Immunofluorescence (ICC/IF): 1:50-200	

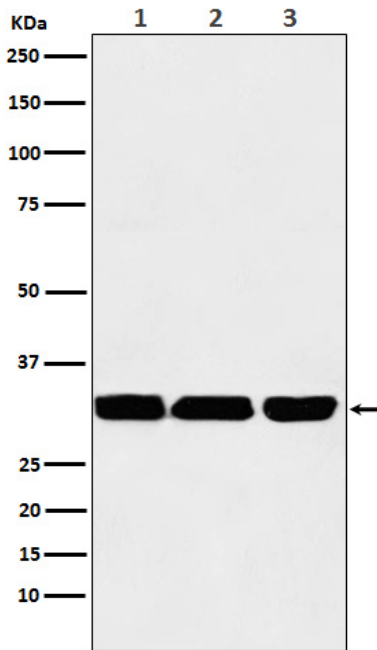
Storage

12 months from date of receipt, -20°C as supplied. 6 months 2 to 8°C after reconstitution. Avoid repeated freezing and thawing.

Reference

Anti-TP53INP1 Antibody (Clone#19T28)被引用在12文献中。

Selected Validation Data



Western blot analysis of p53 DINP1 expression in (1) HepG2 cell lysate; (2) RAW 264.7 cell lysate; (3) PC12 cell lysate.