

## Basic Information

<b>Product Name</b>	Anti-Acetyl-Alpha Tubulin/TUBA1B (Lys40) Antibody (Clone#OTI3H2)
<b>Gene Name</b>	TUBA1B
<b>Source</b>	Mouse
<b>Clonality</b>	Monoclonal
<b>Isotype</b>	IgG2a
<b>Species Reactivity</b>	human, mouse
<b>Tested Application</b>	WB
<b>Contents</b>	PBS (PH 7.3) containing 1% BSA, 50% glycerol and 0.02% sodium azide.
<b>Immunogen</b>	Full length human recombinant protein of human TUBA1B(NP_006073) produced in HEK293T cell.
<b>Concentration</b>	500 ug/ml
<b>Purification</b>	Purified from mouse ascites fluids or tissue culture supernatant by affinity chromatography (protein A/G)
<b>Observed MW</b>	55 kDa
<b>Dilution Ratios</b>	Western blot (WB):1:2000

## Storage

Stable for 12 months from date of receipt. Store at -20°C as received.

## Background Information

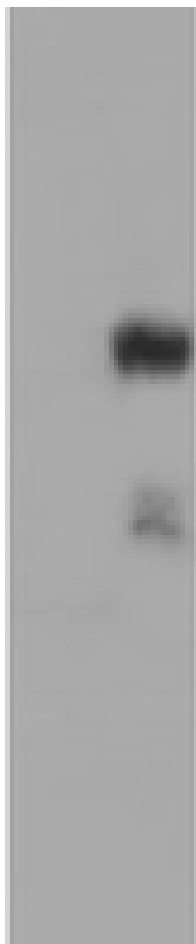
Enables double-stranded RNA binding activity and ubiquitin protein ligase binding activity. Predicted to be involved in microtubule cytoskeleton organization and mitotic cell cycle. Predicted to act upstream of or within cellular response to interleukin-4. Located in microtubule.

## Selected Validation Data

# Anti-Acetyl-Alpha Tubulin/TUBA1B (Lys40) Antibody (Clone#OTI3H2)

**Catalog Number: M08382-5**

170 —  
130 —  
100 —  
70 —  
55 —  
40 —  
35 —  
25 —  
15 —  
10 —



HEK293T cells were transfected with the pCMV6-ENTRY control (Left lane) or pCMV6-ENTRY TUBA1B (Right lane) cDNA for 48 hrs and lysed. Equivalent amounts of cell lysates (5 ug per lane) were separated by SDS-PAGE and immunoblotted with anti-TUBA1B.