

Basic Information

Product Name	Anti-SYN2 Antibody (Clone#21S30)
Gene Name	SYN2
Source	Rabbit
Clonality	Monoclonal
Isotype	IgG
Species Reactivity	human, mouse, rat
Tested Application	WB, IHC
Contents	500 ug/ml; Rabbit IgG in phosphate buffered saline, pH 7.4, 150mM NaCl, 0.02% sodium azide, 0.4-0.5 mg/ml BSA and 50% glycerol.
Immunogen	A synthesized peptide derived from human Synapsin II
Concentration	500 ug/ml
Purification	Affinity-chromatography
Observed MW	52-75 kDa
Dilution Ratios	Western blot (WB): 1:1000-5000 Immunohistochemistry (IHC):1:50-200

Storage

12 months from date of receipt, -20°C as supplied.

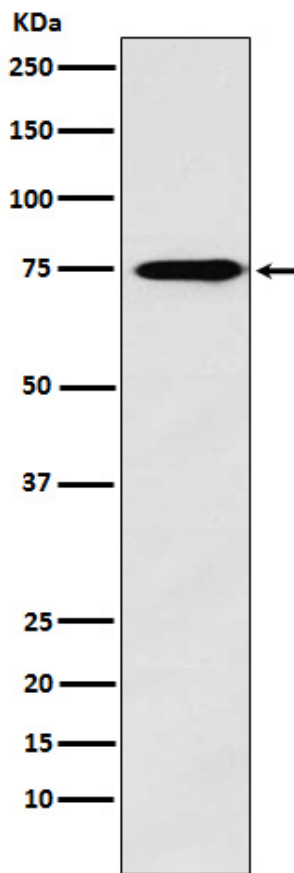
Background Information

Synapsin II is the collective name for synapsin IIa and synapsin IIb, two nearly identical phosphoproteins in the synapsin family that in humans are encoded by the SYN2 gene. Synapsins encode neuronal phosphoproteins which associate with the cytoplasmic surface of synaptic vesicles. Family members are characterized by common protein domains, and they are implicated in synaptogenesis and the modulation of neurotransmitter release, suggesting a potential role in several neuropsychiatric diseases. This member of the synapsin family encodes a neuron-specific phosphoprotein that selectively binds to small synaptic vesicles in the presynaptic nerve terminal. Polymorphisms in this gene are associated with abnormal presynaptic function and related neuronal disorders, including autism, epilepsy, bipolar disorder and schizophrenia. Alternative splicing of this gene results in multiple transcript variants. The tissue inhibitor of metalloproteinase 4 gene is located within an intron of this gene and is transcribed in the opposite direction.

Reference

Anti-SYN2 Antibody (Clone#21S30)被引用在1文献中。

Selected Validation Data



Western blot analysis of Synapsin II expression in Human fetal brain lysate.