

Basic Information

Product Name	Anti-BCL2 Antibody (Clone#OTI2E5)
Gene Name	BCL2
Source	Mouse
Clonality	Monoclonal
Isotype	IgG1
Species Reactivity	human, mouse, rat
Tested Application	WB, IHC
Contents	PBS (PH 7.3) containing 1% BSA, 50% glycerol and 0.02% sodium azide.
Immunogen	Full length human recombinant protein of human BCL2 (NP_000624) produced in E.coli.
Concentration	500 ug/ml
Purification	Purified from mouse ascites fluids or tissue culture supernatant by affinity chromatography (protein A/G)
Dilution Ratios	Western blot (WB): 1:2000 Immunohistochemistry (IHC):1:150

Storage

Stable for 12 months from date of receipt. Store at -20°C as received.

Background Information

Immunoreactive BCL2 protein in the neoplastic cells of almost all follicular lymphomas whereas no BCL2 protein was detected in follicles affected by nonneoplastic processes or in normal lymphoid tissue. Every tumor with molecular-genetic evidence of t(14;18) translocation expressed detectable levels of BCL2 protein, regardless of whether the breakpoint was located in or at a distance from the BCL2 gene. Overexpression of BCL2 blocks the apoptotic death of a pro-B-lymphocyte cell line.

Reference

Anti-BCL2 Antibody (Clone#OTI2E5)被引用在19文献中。

Selected Validation Data

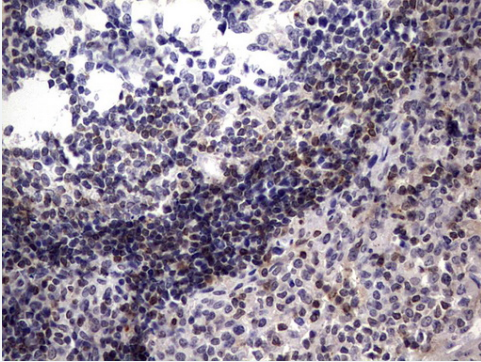


Figure 1. Immunohistochemical staining of paraffin-embedded Human tonsil within the normal limits using anti-BCL2 mouse monoclonal antibody. (Heat-induced epitope retrieval by 1mM EDTA in 10mM Tris, pH8.5, 120°C for 3min, MA00040)

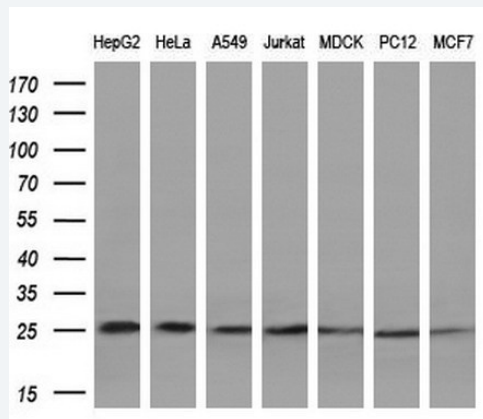


Figure 2. Western blot analysis of extracts (10ug) from 7 different cell lines by using anti-BCL2 monoclonal antibody (1:200).