

Basic Information

Product Name	Anti-Beta Amyloid/APP Antibody (Clone#OTI7G9)	
Gene Name	APP	
Source	Mouse	
Clonality	Monoclonal	
Isotype	IgG1	
Species Reactivity	human, mouse, rat	
Tested Application	WB, IHC, ICC/IF, FCM	
Contents	PBS (pH 7.3) containing 1% BSA, 50% glycerol and 0.02% sodium azide.	
Immunogen	Full length human recombinant protein of human APP (NP_000475) produced in HEK293T cell.	
Concentration	500 ug/ml	
Purification	Purified from mouse ascites fluids or tissue culture supernatant by affinity chromatography (protein A/G)	
Observed MW	87.0 kDa	
Dilution Ratios	Western blot (WB):	1:2000
	Immunohistochemistry (IHC):	1:50
	Immunocytochemistry/Immunofluorescence (ICC/IF):	1:100
	Flow cytometry (FCM):	1:100

Storage

Stable for 12 months from date of receipt. Store at -20°C as received.

Background Information

Amyloid precursor protein (APP) is an integral membrane protein expressed in many tissues and concentrated in the synapses of neurons. It is mapped to 21q21.3. This gene encodes a cell surface receptor and transmembrane precursor protein that is cleaved by secretases to form a number of peptides. Some of these peptides are secreted and can bind to the acetyltransferase complex APBB1/TIP60 to promote transcriptional activation, while others form the protein basis of the amyloid plaques found in the brains of patients with Alzheimer disease. In addition, two of the peptides are antimicrobial peptides, having been shown to have bacteriocidal and antifungal activities. Mutations in this gene have been implicated in autosomal dominant Alzheimer disease and cerebroarterial amyloidosis (cerebral amyloid angiopathy). Multiple transcript variants encoding several different isoforms have been found for this gene.

Product datasheet

Anti-Beta Amyloid/APP Antibody (Clone#OTI7G9)

Catalog Number: **MA00081**

BOSTER

antibody and ELISA experts

BOSTER BIOLOGICAL TECHNOLOGY

Building C21, 3rd and 4th floors, Optics Valley Biomedical Accelerator,
Wuhan East Lake High-tech Development Zone

Web: www.boster.com Phone: 027-67845390 Email: boster@boster.com

Reference

Anti-Beta Amyloid/APP Antibody (Clone#OTI7G9)被引用在1文献中。

Selected Validation Data

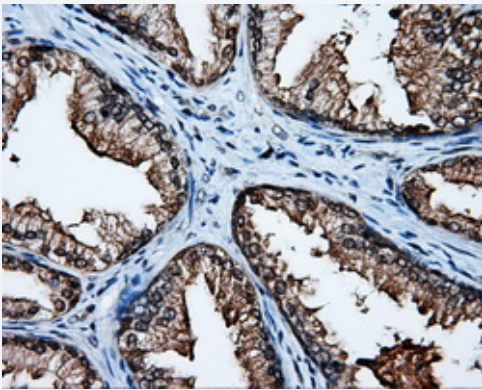


Figure 1. Immunohistochemical staining of paraffin-embedded prostate tissue within the normal limits using anti-APP mouse monoclonal antibody. (Heat-induced epitope retrieval by 10mM citric buffer, pH6.0, 100°C for 10min, MA00081, Dilution 1:50)