

Basic Information

Product Name	Anti-MMP2 Antibody (Clone#OTI4A11)
Gene Name	MMP2
Source	Mouse
Clonality	Monoclonal
Isotype	IgG2a
Species Reactivity	human, mouse, rat
Tested Application	IHC, WB
Contents	PBS (PH 7.3) containing 1% BSA, 50% glycerol and 0.02% sodium azide.
Immunogen	Human recombinant protein fragment corresponding to amino acids 228-507 of human MMP2(NP_004521) produced in E.coli.
Concentration	500 ug/ml
Purification	Purified from mouse ascites fluids or tissue culture supernatant by affinity chromatography (protein A/G)
Observed MW	70.9 kDa
Dilution Ratios	Western blot (WB): 1:2000 Immunohistochemistry (IHC):1:150

Storage

Stable for 12 months from date of receipt. Store at -20°C as received.

Background Information

Proteins of the matrix metalloproteinase (MMP) family are involved in the breakdown of extracellular matrix in normal physiological processes, such as embryonic development, reproduction, and tissue remodeling, as well as in disease processes, such as arthritis and metastasis. Most MMP's are secreted as inactive proproteins which are activated when cleaved by extracellular proteinases. This gene encodes an enzyme which degrades type IV collagen, the major structural component of basement membranes. The enzyme plays a role in endometrial menstrual breakdown, regulation of vascularization and the inflammatory response. Mutations in this gene have been associated with Winchester syndrome and Nodulosis-Arthropathy-Osteolysis (NAO) syndrome. Two transcript variants encoding different isoforms have been found for this gene. [provided by RefSeq, Jul 2008]

Product datasheet

Anti-MMP2 Antibody
(Clone#OTI4A11)

Catalog Number: MA00286



antibody and ELISA experts

BOSTER BIOLOGICAL TECHNOLOGY

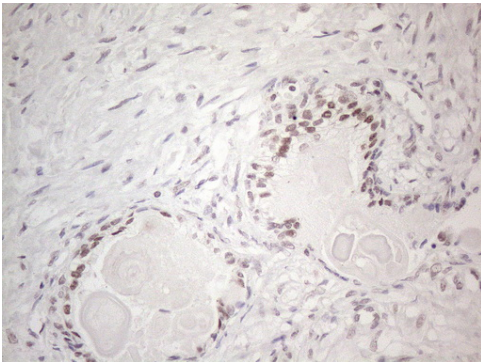
Building C21, 3rd to 5th Floors, Optics Valley Biopharmaceutical Accelerator,
East Lake High-Tech Development Zone, Wuhan.

Web: www.boster.com **Phone:** 027-67845390/1/2 **Email:** boster@boster.com

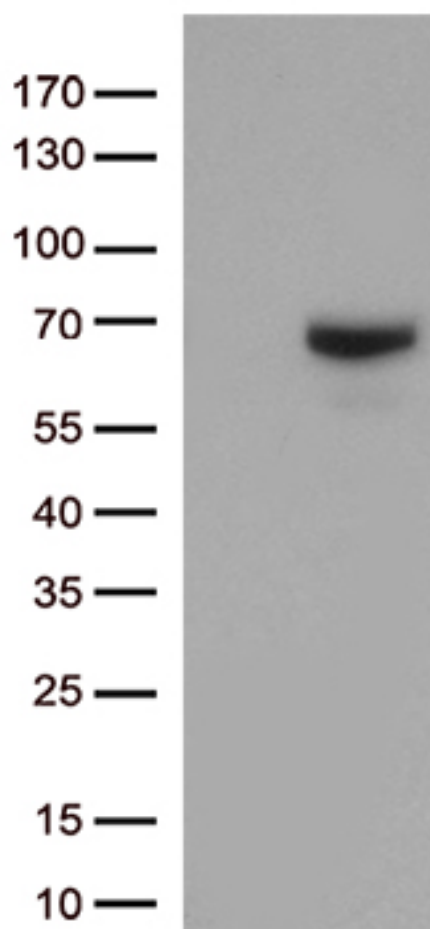
Reference

Anti-MMP2 Antibody (Clone#OTI4A11)被引用在6文献中。

Selected Validation Data



Immunohistochemical staining of paraffin-embedded Human prostate tissue within the normal limits using anti-MMP2 mouse monoclonal antibody. (Heat-induced epitope retrieval by 1mM EDTA in 10mM Tris buffer (pH8.5) at 120°C for 3min, MA00286) (1:150)



HEK293T cells were transfected with the pCMV6-ENTRY control (Left lane) or pCMV6-ENTRY MMP2 (Right lane) cDNA for 48 hrs and lysed. Equivalent amounts of cell lysates (5 ug per lane) were separated by SDS-PAGE and immunoblotted with anti-MMP2 (Cat# MA00286)(1:500).