

Basic Information

Product Name	Anti-MMP13 Antibody (Clone#OTI3H3)	
Gene Name	MMP13	
Source	Mouse	
Clonality	Monoclonal	
Isotype	IgG1	
Species Reactivity	human, mouse, rat	
Tested Application	WB, IHC, ICC/IF	
Contents	PBS (PH 7.3) containing 1% BSA, 50% glycerol and 0.02% sodium azide.	
Immunogen	Human recombinant protein fragment corresponding to amino acids 104-471 of human MMP13(NP_002418) produced in HEK293T cell.	
Concentration	500 ug/ml	
Purification	Purified from mouse ascites fluids or tissue culture supernatant by affinity chromatography (protein A/G)	
Observed MW	42.2 kDa	
Dilution Ratios	Western blot (WB):	1:1000
	Immunohistochemistry (IHC):	1:150
	Immunocytochemistry/Immunofluorescence (ICC/IF):	1:100

Storage

Stable for 12 months from date of receipt. Store at -20°C as received.

Background Information

Collagenase 3 is an enzyme that in humans is encoded by the MMP13 gene. This gene encodes a member of the peptidase M10 family of matrix metalloproteinases (MMPs). Proteins in this family are involved in the breakdown of extracellular matrix in normal physiological processes, such as embryonic development, reproduction, and tissue remodeling, as well as in disease processes, such as arthritis and metastasis. The encoded preproprotein is proteolytically processed to generate the mature protease. This protease cleaves type II collagen more efficiently than types I and III. It may be involved in articular cartilage turnover and cartilage pathophysiology associated with osteoarthritis. Mutations in this gene are associated with metaphyseal anadysplasia. This gene is part of a cluster of MMP genes on chromosome 11.

Product datasheet

**Anti-MMP13 Antibody
(Clone#OTI3H3)**

Catalog Number: MA00420

BOSTER

antibody and ELISA experts

BOSTER BIOLOGICAL TECHNOLOGY

Building C21, 3rd and 4th floors, Optics Valley Biomedical Accelerator,
Wuhan East Lake High-tech Development Zone

Web: www.boster.com **Phone:** 027-67845390 **Email:** boster@boster.com

Reference

Anti-MMP13 Antibody (Clone#OTI3H3)被引用在2文献中。

Selected Validation Data

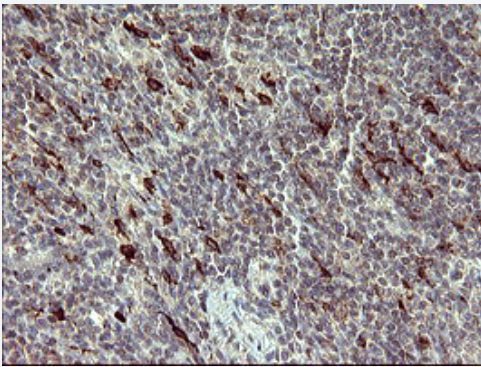


Figure 1. Immunohistochemical staining of paraffin-embedded Human lymphoma tissue using anti-MMP13 mouse monoclonal antibody. (Heat-induced epitope retrieval by 10mM citric buffer, pH6.0, 120°C for 3min, MA00420)

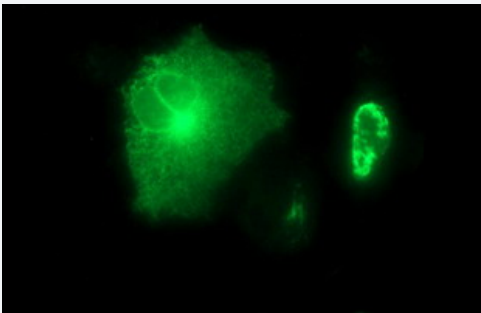


Figure 4. Anti-MMP13 mouse monoclonal antibody (MA00420) immunofluorescent staining of COS7 cells transiently transfected by pCMV6-ENTRY MMP13 .

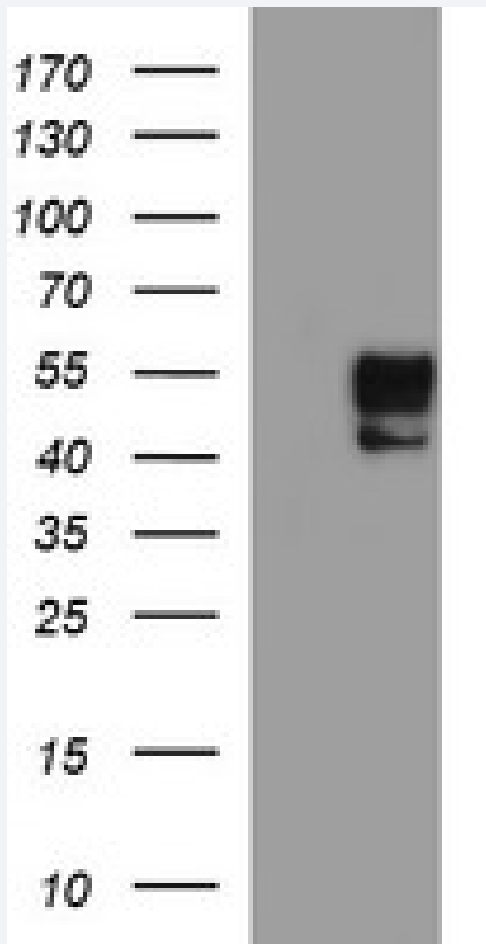


Figure 5. HEK293T cells were transfected with the pCMV6-ENTRY control (Left lane) or pCMV6-ENTRY MMP13 (Right lane) cDNA for 48 hrs and lysed. Equivalent amounts of cell lysates (5 ug per lane) were separated by SDS-PAGE and immunoblotted with anti-MMP13.